

TEXcover[®]
by *Sublitex*

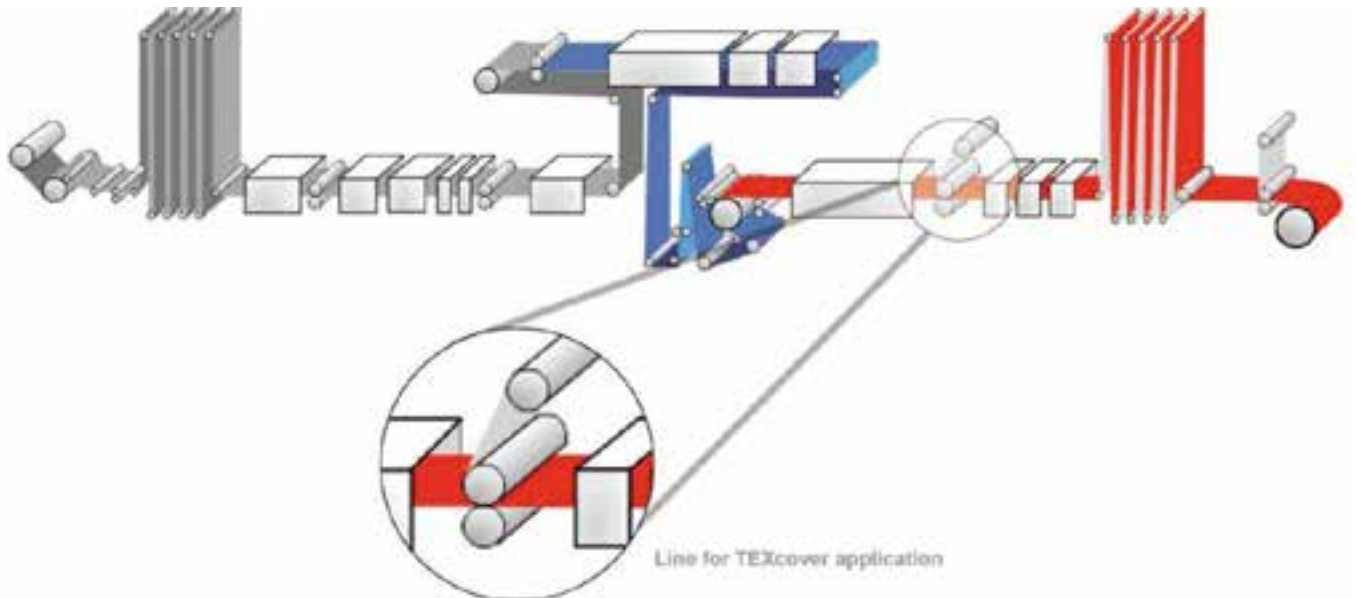
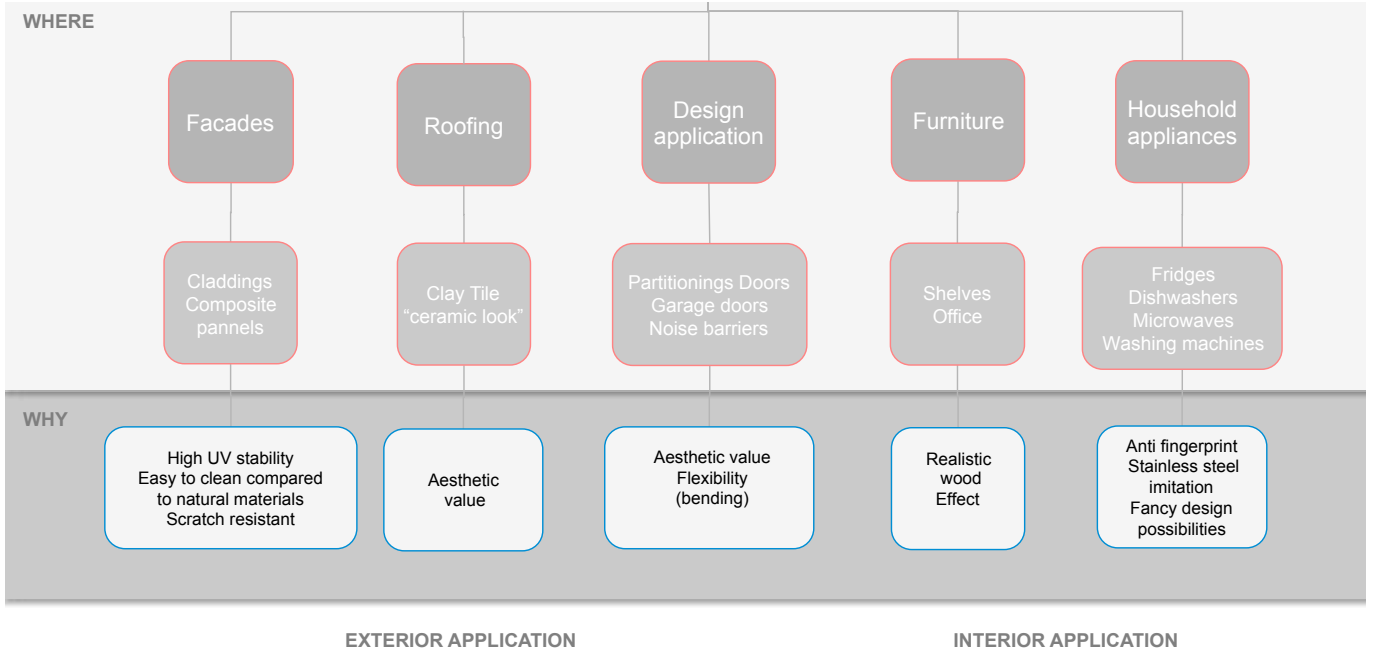
SUBLITEX
The Innovative Printing



Texcover is a printed PET film developed by Sublitex to revolutionise the pre-painted materials' market. Texcover is a great alternative to traditional types of liquid painting; it maintains its lustre and durability and has the advantage of not being limited to just single solid colours.

It is used for external coatings in architecture, the outer surfaces of domestic appliances, and for all products requiring a high level of quality and technical content, such as composite panels, façade coatings, frames and coverings, false ceilings, door panels, modular walls, domestic appliances, and the interiors of ships, trains and cars. The true-to-life effects achieved by this new technology include natural effects such wood finish, marble, granite, stone walls, and metal effects such as brushed steel, titanium, copper, silver and aluminium. Texcover can also reproduce any pattern or specific design requested by the customer.


We decline any responsibility for differences in color and design definition which occur in production.






TECHNICAL DATA SHEET

Download @ <http://www.sublitex.com/index.php/en/products/texcover.html>





Product Description ENG
Date: 12.10.2017 Rev. 5

DESCRIPTION

Polyester film (PET) printed with rotogravure, used for the finishing of:

- Aluminum
- Steel
- Stainless steel
- Hot Galvanized Steel
- Cold Rolled Steel
- Electrogalvanized Steel

Available for internal and external use (UV-stabilized film)

A specific base coating is required

SUPPORT

- Print width: max 1500 mm (1800 mm upon request)
- Film thickness: 15-20 µm
- Base weight: 21-28 g/m²
- Core diameter: 75 to 150 mm
- Roll diameter: 200 to 500 mm
- Roll length max.: 4000 m
- Weight: max. 200 kg

PRINTING

In rotogravure using solvent based inks.

BRIGHTNESS

Matte (20 gloss) or High Gloss (>90 gloss)

APPLICATION SYSTEMS

It is possible to apply the product with catandring, and the optimum adhesion temperature can vary from 140°C to 190°C depending on the type of coil, type of base coating of the same.

To optimize the operating conditions we recommend running tests in production, considering the transfer process of the film and the support to enable.



SUBLITEX
sublitex@miroglio.com sublitex.com


Miroglio Textile s.r.l.
Strada Tagliata 25
12051 Alba - Italy
t. (+39) 0173 298741
f. (+39) 0173 298220

Cap.Soc.Euro 50.000.000 I.v.
Nr. R.E.A. CN-273687
Cod.Fisc.P.I. IT 03232390041

Unico socio e sotto
la direzione e coordinamento
di Miroglio s.p.a.

Sede legale:
Via S. Margherita 23
12051 Alba - Italy



QUALITY AND R&D

Internal quality check are performed through application of comparative test with the master(first standard production) for the evaluation of the color shade on the decorated surface.

Internal analysis and quality checks:

- Solvent, inks and printed film, are analyzed by:
 - FT-IR-ATR (Infrared Spectroscopy)
 - GC-FID / HS-GC (Gas chromatography)
- Artificial weathering (UV-stabilized film) in accordance with:
 - UNI EN ISO 4892-2 (Xenon test with solar filter)
 - UNI EN ISO 4892-3/2006 (UV-B @314 nm)

External quality checks for UV-stabilized film (outdoor use)

- ASTM 4141 (EMMAQUA/Q-Trac - natural sunlight concentrator)
- ASTM -D 1014 (FLORIDA TEST)
- ISO 7724/3 - 1984 (QV-A @ 314 nm); evaluation of
 - ISO 4628/2 (Blistering)
 - ISO 4628/3 (Rusting)
 - ISO 4628/2 (Cracking)
 - ISO 4628/5 (Flaking)
 - ISO 105 A02 (Change of colour)

Test conducted @ "Stazione Sperimentale per le Industrie degli Oli e dei Grassi" (SSOG).
The areas of responsibility of the SSOG are specified in:

- D.Lgs. 2 February 1919, n.637;
- D.Lgs. 29 October 1999, n.540;
- D.Lgs. 23 February 2001, n.71.

	Blistering (ISO 4628/2)	Rusting (ISO 4628/3)	Cracking (ISO 4628/2)	Flaking (ISO 4628/5)
Artificial weathering (QUVA @ 340 nm - 3000h) (UNI EN ISO 7724-3 - 1984)	Absent	Absent	Absent	Absent
Change of color [ISO 105 A02] after artificial weathering (ISO 7724-3 - 1984)	After 1000 h	After 2000 h	After 3000 h	
	5/5	5/5	4/5	



SUBLITEX
sublitex@miroglio.com sublitex.com


Miroglio Textile s.r.l.
Strada Tagliata 25
12051 Alba - Italy
t. (+39) 0173 298741
f. (+39) 0173 298220

Cap.Soc.Euro 50.000.000 I.v.
Nr. R.E.A. CN-273687
Cod.Fisc.P.I. IT 03232390041

Unico socio e sotto
la direzione e coordinamento
di Miroglio s.p.a.

Sede legale:
Via S. Margherita 23
12051 Alba - Italy



Texcover quality checks for indoor use (independent laboratory accredited)

Property	Standard	Result	
Coefficient of friction (static)	ASTM D 1894	0,4	
Gloss	DN 67530	180 Gloss @ 20° 100-120 Gloss @ 60° - *value depending on the design	
Adhesion after drawing	EDCA T6	No loss of adhesion	
Resistance to bending	EDCA T7	0,51	
Resistance to rapid deformation	ASTM D 2794-93	Not below 140 t/m ²	
Humidity chamber	ASTM D 2247-94	Unchanged after 1000 hours	
Resistance to salt spray	EDCA T8	Unchanged after 500 hours	
Pencil hardness	UNI 10782-99	H (Faber Castell)	
Resistance to dry heat	UNI EN 12722:2009 (Min 1 - Max 5)	Unchanged until 85°C (185°F)	
Artificial light fastness	ISO 10545-A02 / BS 100A02:1978 • Temperature 55°C (131°F) • Lamp Xenon Arc • Cycle Irradiance Only Reference: International blue scale (Min 1 - Max 8)	2*E *value depending on the design	
Stain resistance UNI EN 12720:2009 (Min 1 - Max 5) 5 No defect 4 Slight glow barely visible 3 Visible defect 2 Marked defect 1 Heavy surface degradation Time of contact in according to UNI 10944:2001	Product	Result	Value
	Acetic acid (10%)	PASS	5
	Acetone	PASS	5
	Ammonia (10%)	PASS	5
	Citric Acid (10%)	PASS	4
	Soap	PASS	5
	Coffee	PASS	5
	Disinfectant*	PASS	5
	Etanol 48%	PASS	5
	Buffet Acetate / Ethyl Acetate 1:1	PASS	5
	Olive Oil	PASS	5
	Paraffin Oil	PASS	5
	Sodium carbonate (10%)	PASS	5
Sodium Chloride (15%)*	PASS	5	



SUBLITEX
sublitex@miroglio.com sublitex.com


Miroglio Textile s.r.l.
Strada Tagliata 25
12051 Alba - Italy
t. (+39) 0173 298741
f. (+39) 0173 298220

Cap.Soc.Euro 50.000.000 I.v.
Nr. R.E.A. CN-273687
Cod.Fisc.P.I. IT 03232390041

Unico socio e sotto
la direzione e coordinamento
di Miroglio s.p.a.

Sede legale:
Via S. Margherita 23
12051 Alba - Italy



	Yes	PASS	5
* In water solution ** Chloramines 7.25% in water	Distilled water	PASS	5
	Red wine	PASS	4
	Beer	PASS	5

PACKAGING

Specific for this product.

STORAGE

Keep in dry and ventilated place, protect from heat and sunlight.

PRODUCT EXPIRY DATE

1 year in the above-mentioned conditions.

NOTICE AND ADVICE

Sublitex is not responsible for unusual applications or those who have not followed the operational specifications of storage provided.

State of Art

The above information, reflect our current "State of the Art" and are disclosed by us without commitment. However possible future changes and revisions according to the evolving technology and business are possible. We invite the buyer to the verification of the information given on the basis of its technology and engineering.



SUBLITEX
sublitex@miroglio.com sublitex.com

Miroglio Textile s.r.l.
Strada Tagliata 25
12051 Alba - Italy
t. (+39) 0173 298741
f. (+39) 0173 298220

Cap.Soc.Euro 50.000.000 I.v.
Nr. R.E.A. CN-273687
Cod.Fisc.P.I. IT 03232390041

Unico socio e sotto
la direzione e coordinamento
di Miroglio s.p.a.

Sede legale:
Via S. Margherita 23
12051 Alba - Italy

TEST & CERTIFICATE



SSOG



ICQ



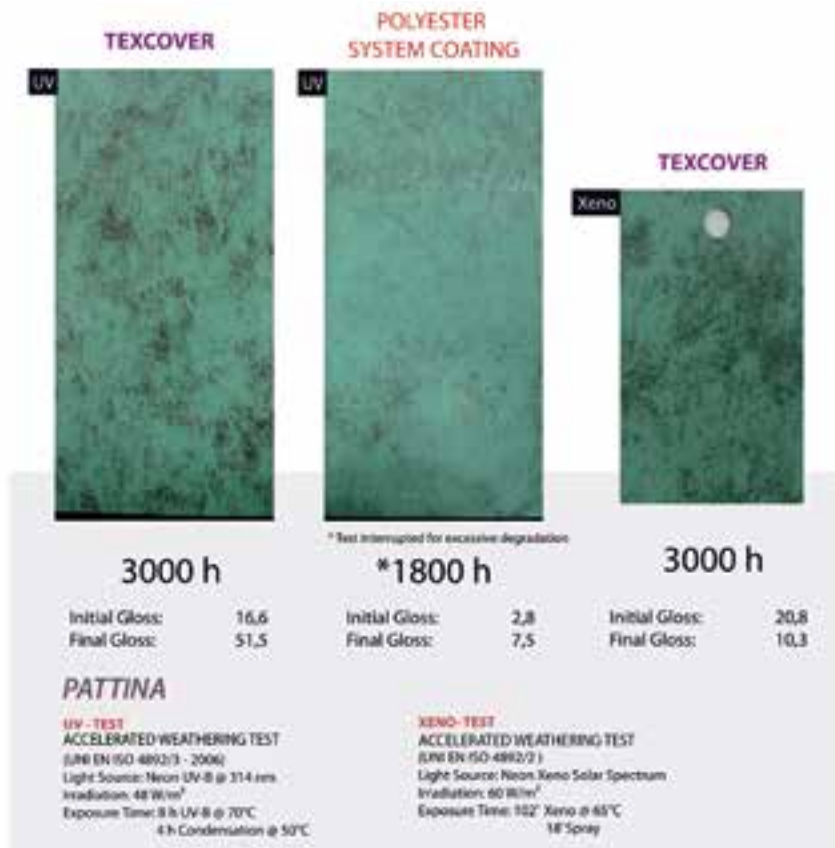
EMMAQA TEST
(ASTM D4141)



Florida exposure

TEST & CERTIFICATE

Carried out in our labs



TEST & CERTIFICATE

Carried out in our labs

TEXCOVER



3000 h

RENO-TEST
ACCELERATED WEATHERING TEST
(EN ISO 4492-2)
Light Source: Xenon Xenon Solar Spectrum
Irradiation: 60 W/m²
Exposure Time: 102' Xenon @ 65°C
18' Spray

TEST & CERTIFICATION



R E N D E R I N G

50757 VAR 001

WOOD

LAYOUT



120 CM (47.2")

Max useful printing width: 1530 mm

REAL SIZE



Colour samples are only indicative, not being possible the faithful reproduction on print.

50757 VAR 002

WOOD

LAYOUT



Max useful printing width: 1530 mm

REAL SIZE



Colour samples are only indicative, not being possible the faithful reproduction on print.

50758 VAR 001

WOOD

LAYOUT



120 CM (47.2")

Max useful printing width: 1530 mm

REAL SIZE



Colour samples are only indicative, not being possible the faithful reproduction on print.

50758 VAR 002

WOOD

LAYOUT



120 CM (47.2")

Max useful printing width: 1530 mm

REAL SIZE



Colour samples are only indicative, not being possible the faithful reproduction on print.

50758 VAR 008

WOOD

LAYOUT



120 CM (47.2")

Max useful printing width: 1530 mm

REAL SIZE



Colour samples are only indicative, not being possible the faithful reproduction on print.

50996 VAR 001

WOOD

LAYOUT



90 CM (35.4")

Max useful printing width: 1530 mm

REAL SIZE



Colour samples are only indicative, not being possible the faithful reproduction on print.

50996 VAR 002

WOOD

LAYOUT



90 CM (35.4")

Max useful printing width: 1530 mm

REAL SIZE



Colour samples are only indicative, not being possible the faithful reproduction on print.

90012 VAR 001

WOOD

LAYOUT



Max useful printing width: 1530 mm

REAL SIZE



Colour samples are only indicative, not being possible the faithful reproduction on print.

90047 VAR 001

WOOD



LAYOUT



64 CM (25.2")

Max useful printing width: 1530 mm

REAL SIZE



Colour samples are only indicative, not being possible the faithful reproduction on print.

90108 VAR 003

WOOD

LAYOUT



120 CM (47.2")

Max useful printing width: 1065 mm

REAL SIZE



Colour samples are only indicative, not being possible the faithful reproduction on print.



R E N D E R I N G

90228 VAR 001

WOOD

LAYOUT



95 CM (37.4")

Max useful printing width: 1530 mm

REAL SIZE



Colour samples are only indicative, not being possible the faithful reproduction on print.

90228 VAR 002

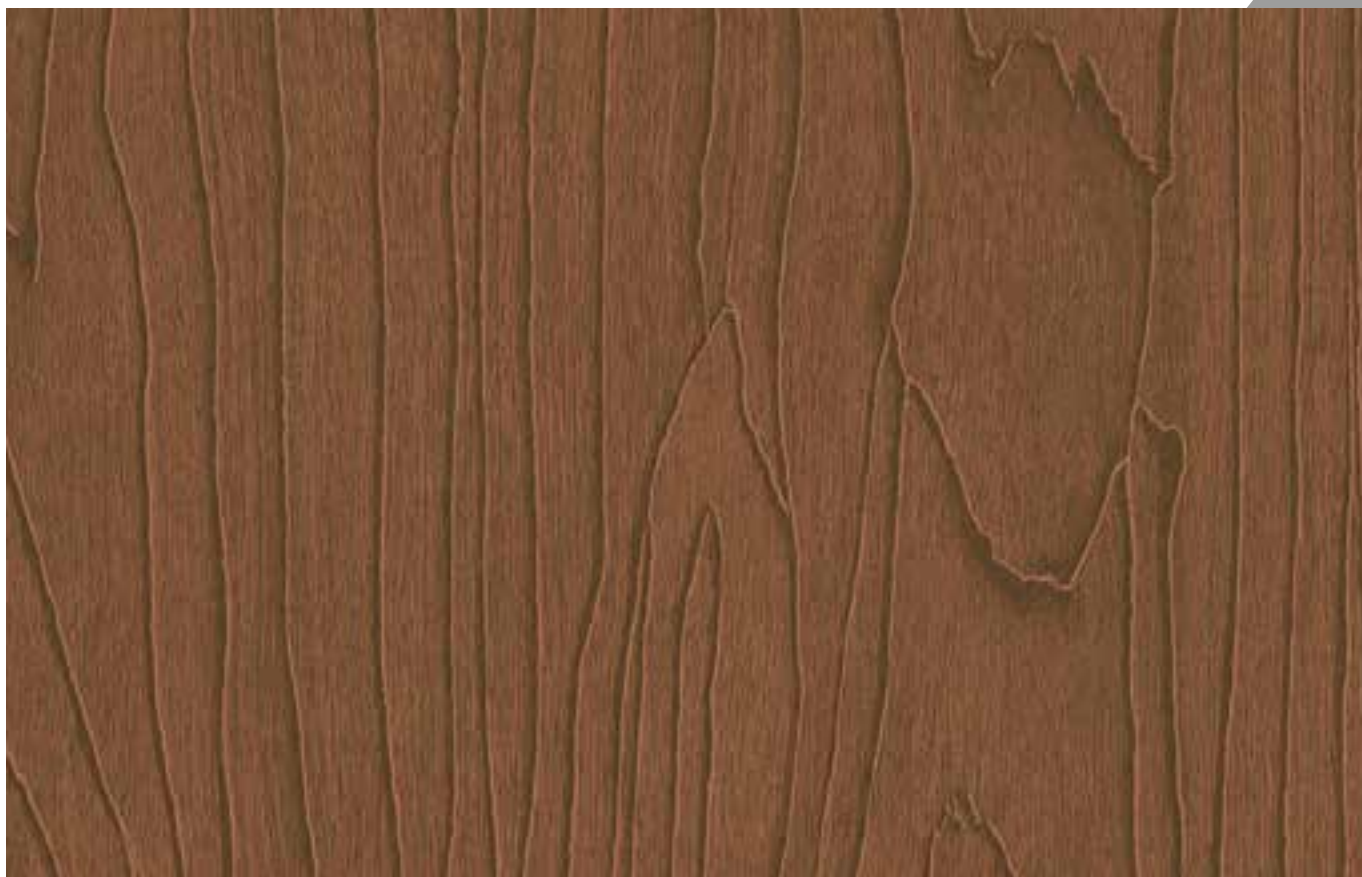
WOOD

LAYOUT



Max useful printing width: 1530 mm

REAL SIZE



Colour samples are only indicative, not being possible the faithful reproduction on print.

90228 VAR 003

WOOD

LAYOUT



95 CM (37.4")

Max useful printing width: 1530 mm

REAL SIZE



Colour samples are only indicative, not being possible the faithful reproduction on print.

90261 VAR 001

WOOD

LAYOUT



86 CM (33.4")

Max useful printing width: 1530 mm

REAL SIZE



Colour samples are only indicative, not being possible the faithful reproduction on print.

90263 VAR 001

WOOD

LAYOUT



110 CM (43.3")

Max useful printing width: 1530 mm

REAL SIZE



Colour samples are only indicative, not being possible the faithful reproduction on print.

90295 VAR 001

WOOD

LAYOUT



64 CM (25.2")

Max useful printing width: 1530 mm

REAL SIZE



Colour samples are only indicative, not being possible the faithful reproduction on print.

90297 VAR 005

WOOD

LAYOUT



95 CM (37.4")

Max useful printing width: 1530 mm

REAL SIZE



Colour samples are only indicative, not being possible the faithful reproduction on print.

90311 VAR 001

WOOD

LAYOUT



69 CM (27.2")

Max useful printing width: 1530 mm

REAL SIZE



Colour samples are only indicative, not being possible the faithful reproduction on print.

90311 VAR 002

WOOD

LAYOUT



68 CM (27.2")

Max useful printing width: 1530 mm

REAL SIZE



Colour samples are only indicative, not being possible the faithful reproduction on print.

90318 VAR 001

WOOD

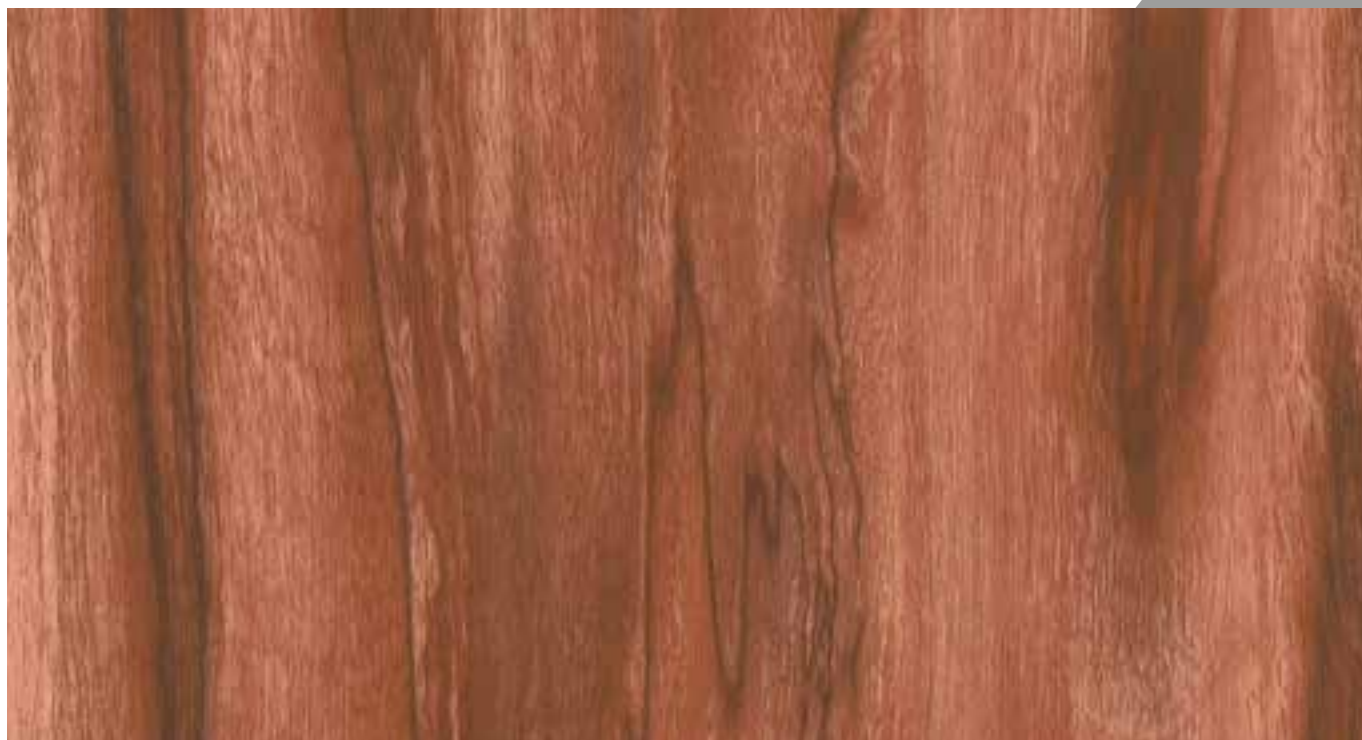
LAYOUT



90 CM (35.4")

Max useful printing width: 1530 mm

REAL SIZE



Colour samples are only indicative, not being possible the faithful reproduction on print.

90370 VAR 001

WOOD

LAYOUT



120 cm (47.2")

Max useful printing width: 1530 mm

REAL SIZE



Colour samples are only indicative, not being possible the faithful reproduction on print.

90388 VAR 001

WOOD

LAYOUT



Max useful printing width: 1530 mm

REAL SIZE



Colour samples are only indicative, not being possible the faithful reproduction on print.

90389 VAR 001

WOOD

LAYOUT



90 CM (35.4")

Max useful printing width: 1530 mm

REAL SIZE



Colour samples are only indicative, not being possible the faithful reproduction on print.

90390 VAR 001

WOOD

LAYOUT



Max useful printing width: 1530 mm

REAL SIZE



Colour samples are only indicative, not being possible the faithful reproduction on print.

90391 VAR 001

WOOD

LAYOUT



120 CM (47.2")

Max useful printing width: 1530 mm

REAL SIZE



Colour samples are only indicative, not being possible the faithful reproduction on print.

90392 VAR 001

WOOD

LAYOUT



95 CM (37.4")

Max useful printing width: 1530 mm

REAL SIZE



Colour samples are only indicative, not being possible the faithful reproduction on print.

90395 VAR 001

WOOD

LAYOUT



102 CM (40.6")

Max useful printing width: 1530 mm

REAL SIZE



Colour samples are only indicative, not being possible the faithful reproduction on print.

90399 VAR 001

WOOD

LAYOUT



90 CM (35.4")

Max useful printing width: 1530 mm

REAL SIZE



Colour samples are only indicative, not being possible the faithful reproduction on print.

93059 VAR 001

WOOD

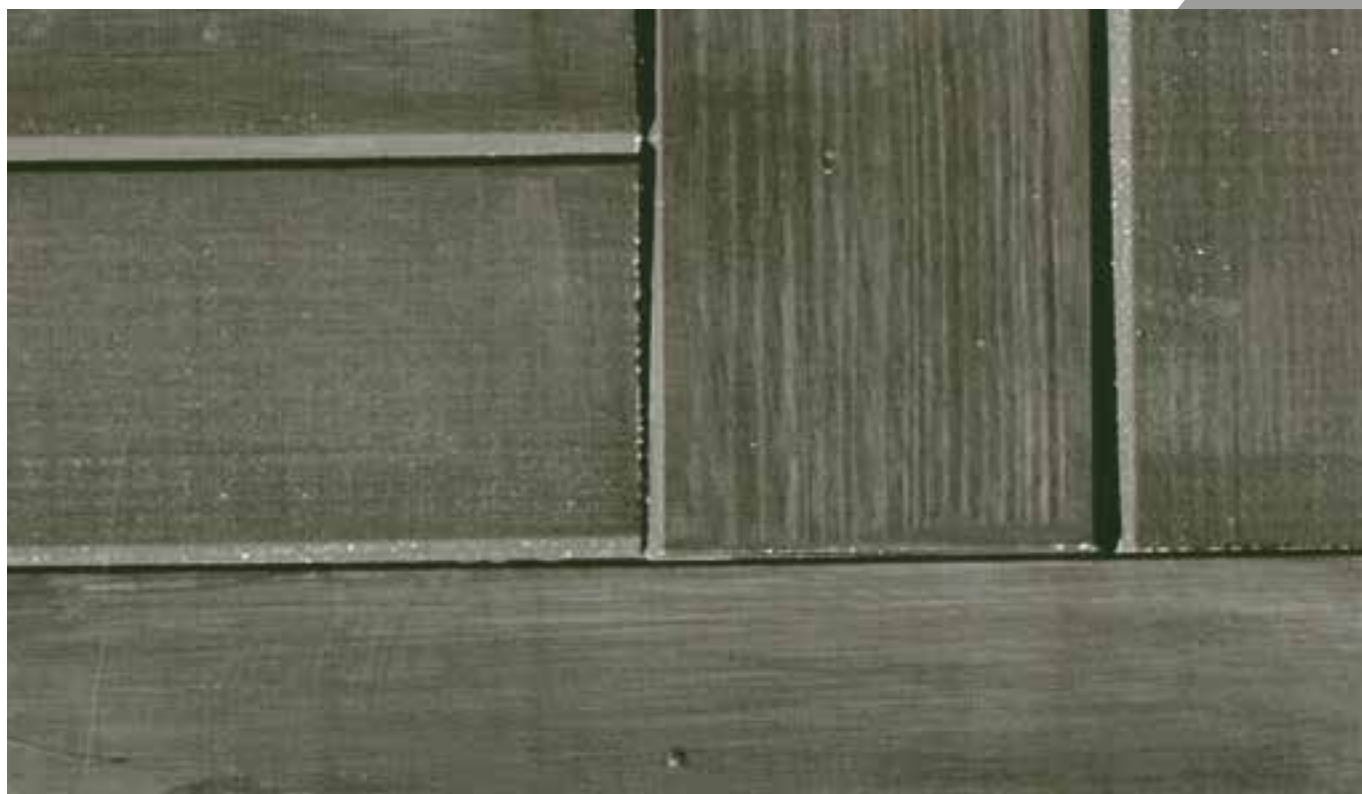
LAYOUT



90 CM (35.4")

Max useful printing width: 1530 mm

REAL SIZE



Colour samples are only indicative, not being possible the faithful reproduction on print.

93184 VAR 001

WOOD



LAYOUT



90 CM (35.4")

Max useful printing width: 1530 mm

REAL SIZE



Colour samples are only indicative, not being possible the faithful reproduction on print.

93184 VAR 003

WOOD



LAYOUT



90 CM (35.4")

Max useful printing width: 1530 mm

REAL SIZE



Colour samples are only indicative, not being possible the faithful reproduction on print.

93191 VAR 001

WOOD

LAYOUT



95 CM (37.4")

Max useful printing width: 1530 mm

REAL SIZE



Colour samples are only indicative, not being possible the faithful reproduction on print.

50763 VAR 011

STONE / MARBLE

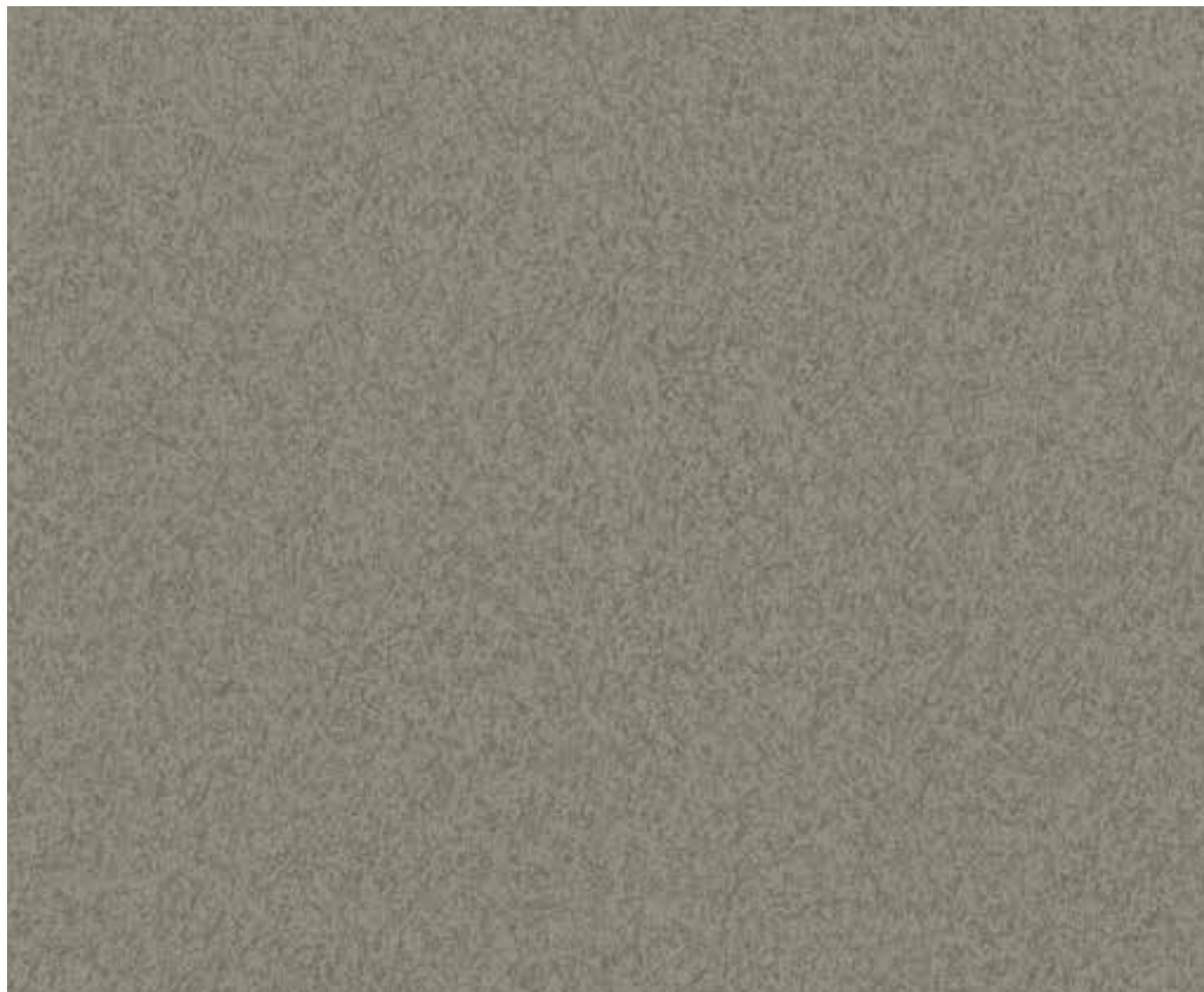
LAYOUT



54 CM (21.3")

Max useful printing width: 1530 mm

REAL SIZE



Colour samples are only indicative, not being possible the faithful reproduction on print.

50843 VAR 001

STONE / MARBLE

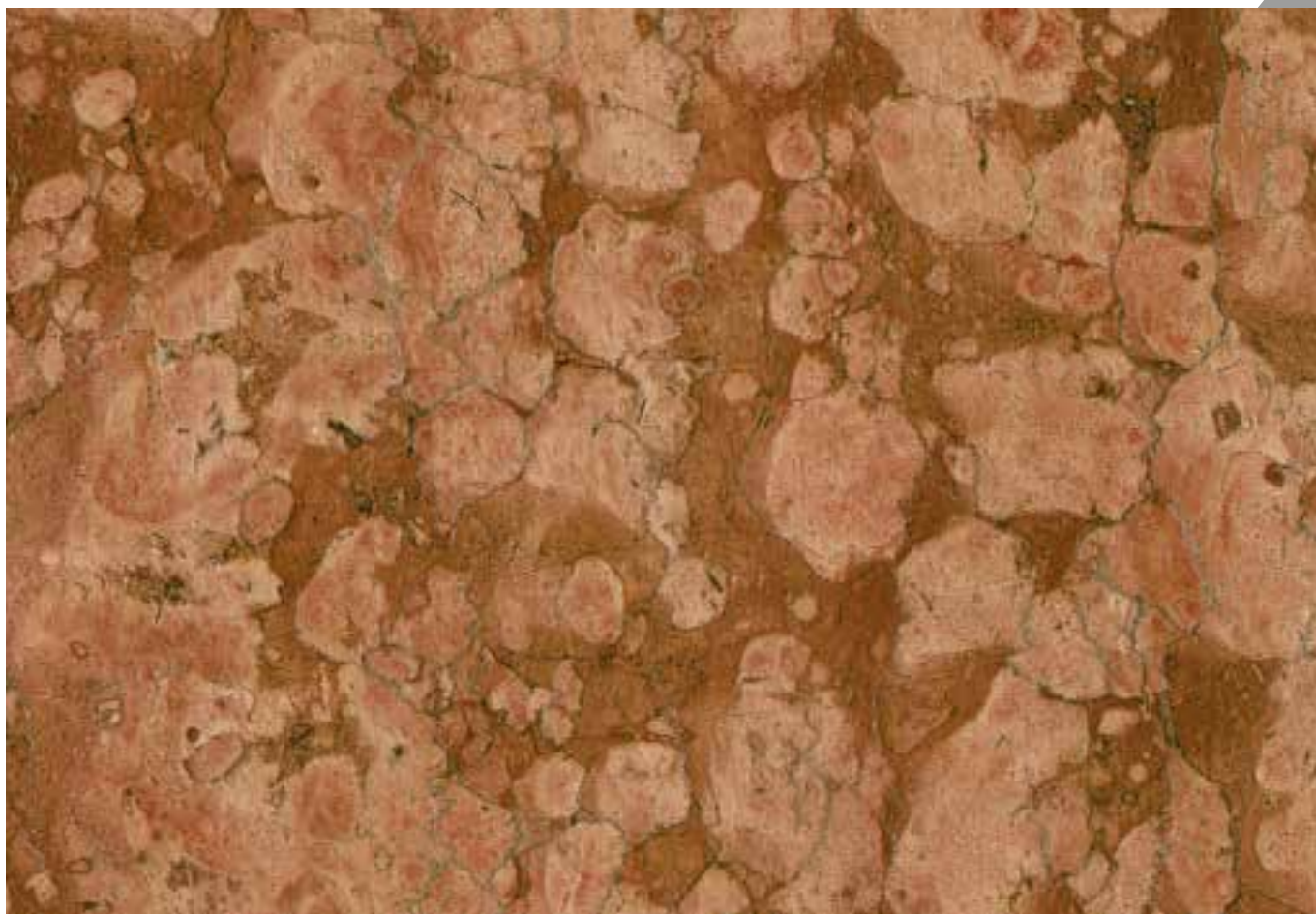
LAYOUT



64 CM (25.2")

Max useful printing width: 1530 mm

REAL SIZE



Colour samples are only indicative, not being possible the faithful reproduction on print.

50959 VAR 004

STONE / MARBLE

LAYOUT



64 CM (25.2")

Max useful printing width: 1530 mm

REAL SIZE



Colour samples are only indicative, not being possible the faithful reproduction on print.

90103 VAR 003

STONE / MARBLE

LAYOUT



90 CM (35.4")

Max useful printing width: 1530 mm

REAL SIZE



Colour samples are only indicative, not being possible the faithful reproduction on print.

90103 VAR 004

STONE / MARBLE

LAYOUT



90 CM (35.4")

Max useful printing width: 1530 mm

REAL SIZE

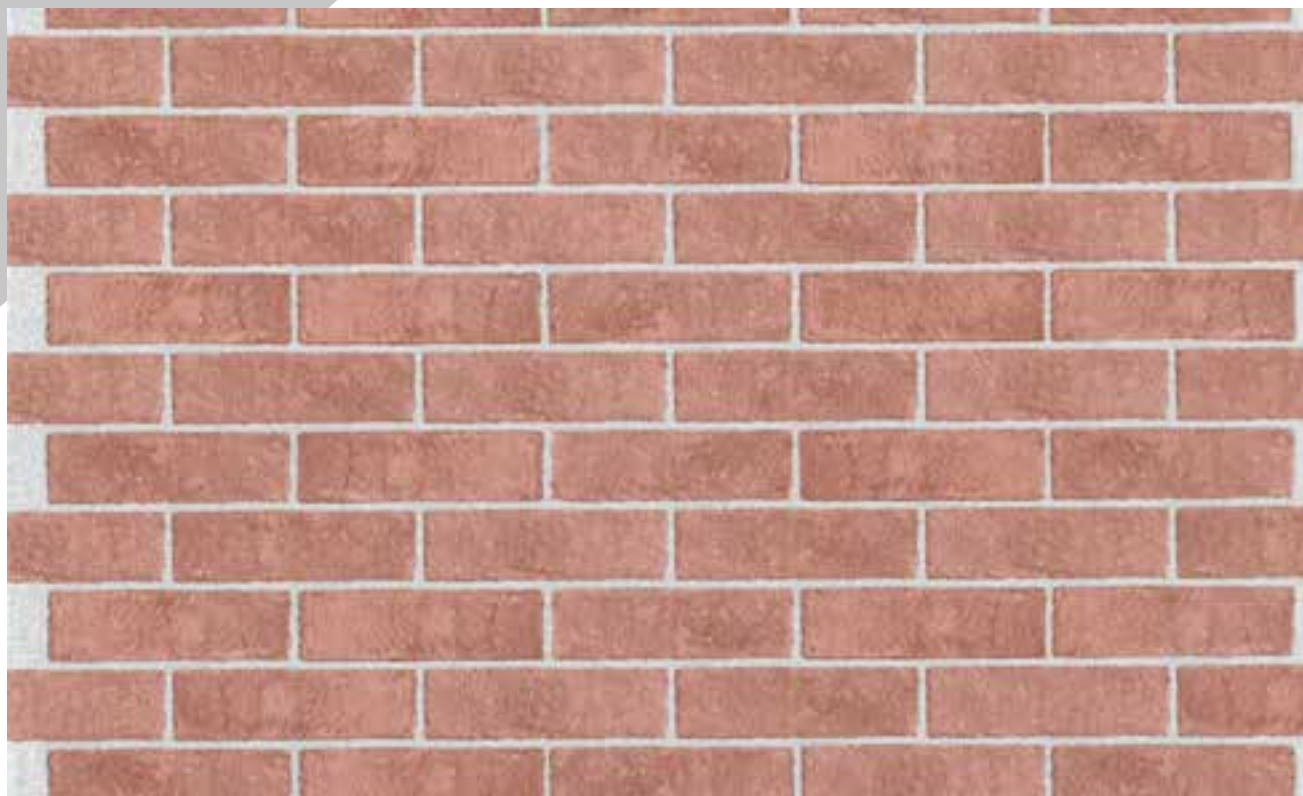


Colour samples are only indicative, not being possible the faithful reproduction on print.

90182 VAR 001

STONE / MARBLE

LAYOUT



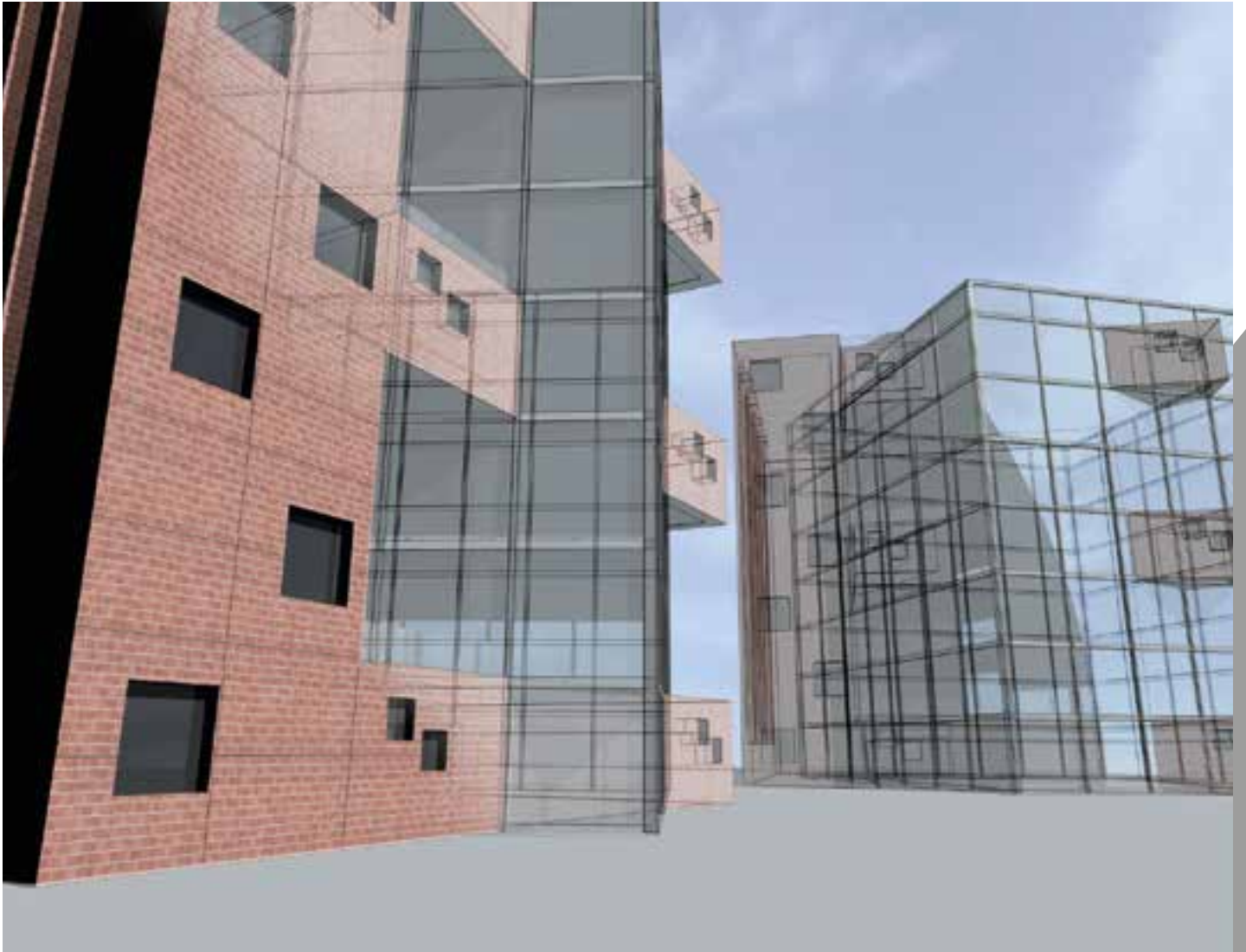
64 CM (25.2")

Max useful printing width: 1070 mm

REAL SIZE



Colour samples are only indicative, not being possible the faithful reproduction on print.



R E N D E R I N G

90264 VAR 002

STONE / MARBLE

LAYOUT



62 CM (24.4")

Max useful printing width: 1530 mm

REAL SIZE



Colour samples are only indicative, not being possible the faithful reproduction on print.

90265 VAR 001

STONE / MARBLE

LAYOUT



Max useful printing width: 1530 mm

REAL SIZE



Colour samples are only indicative, not being possible the faithful reproduction on print.

90280 VAR 001

STONE / MARBLE

LAYOUT



75 CM (29.5")

Max useful printing width: 1020 mm

REAL SIZE



Colour samples are only indicative, not being possible the faithful reproduction on print.

90313 VAR 001

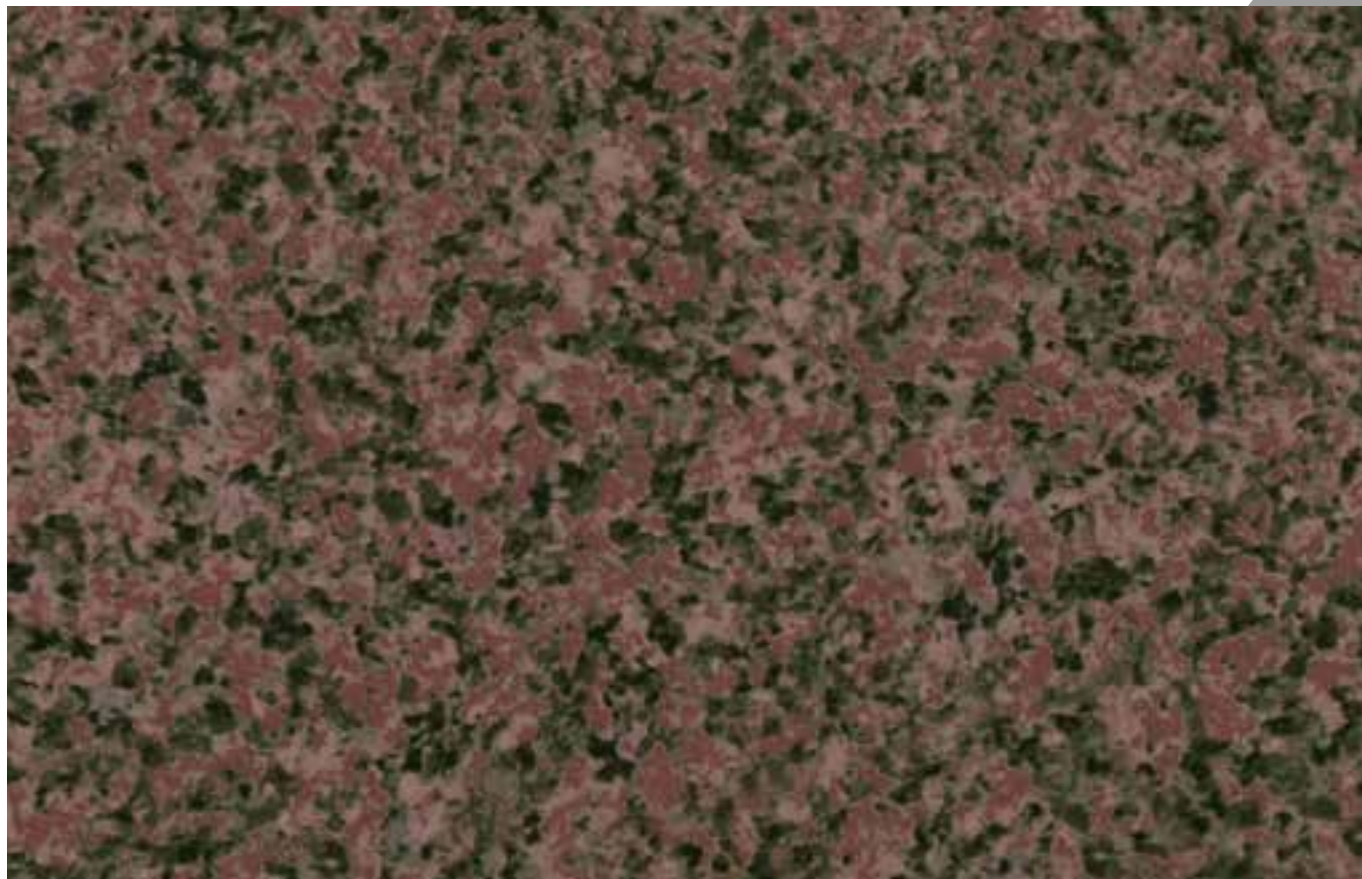
STONE / MARBLE

LAYOUT



Max useful printing width: 1530 mm

REAL SIZE



Colour samples are only indicative, not being possible the faithful reproduction on print.

93052 VAR 001

STONE / MARBLE

LAYOUT



68 CM (27.2")

Max useful printing width: 1530 mm

REAL SIZE

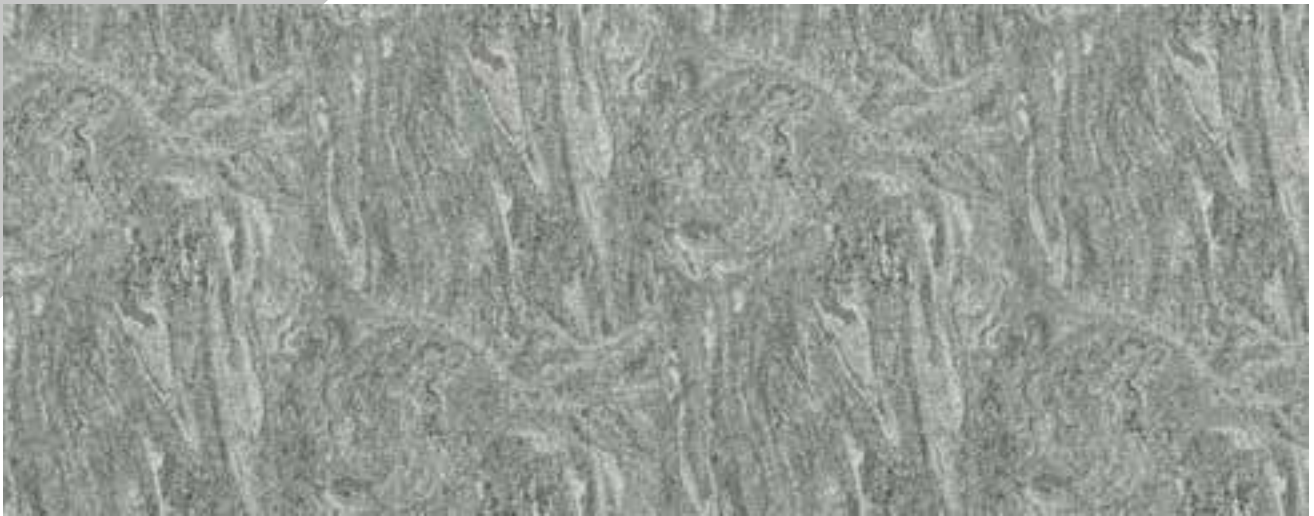


Colour samples are only indicative, not being possible the faithful reproduction on print.

93060 VAR 001

STONE / MARBLE

LAYOUT



54 CM (21.3")

Max useful printing width: 1530 mm

REAL SIZE



Colour samples are only indicative, not being possible the faithful reproduction on print.

93075 VAR 001

STONE / MARBLE

LAYOUT



54 CM (21.3")

Max useful printing width: 1530 mm

REAL SIZE



Colour samples are only indicative, not being possible the faithful reproduction on print.

93087 VAR 001

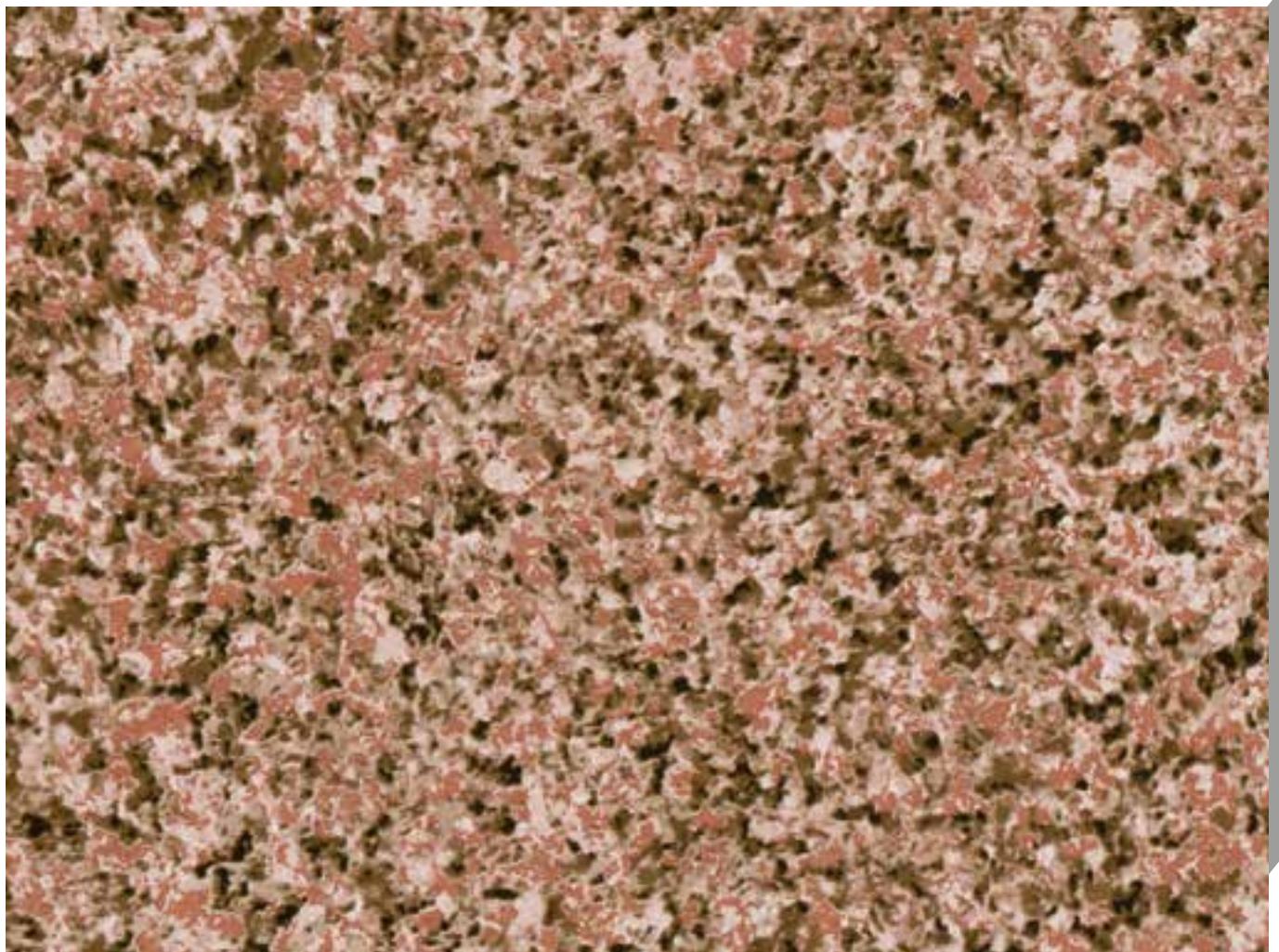
STONE / MARBLE

LAYOUT



Max useful printing width: 1530 mm

REAL SIZE



Colour samples are only indicative, not being possible the faithful reproduction on print.

93128 VAR 007

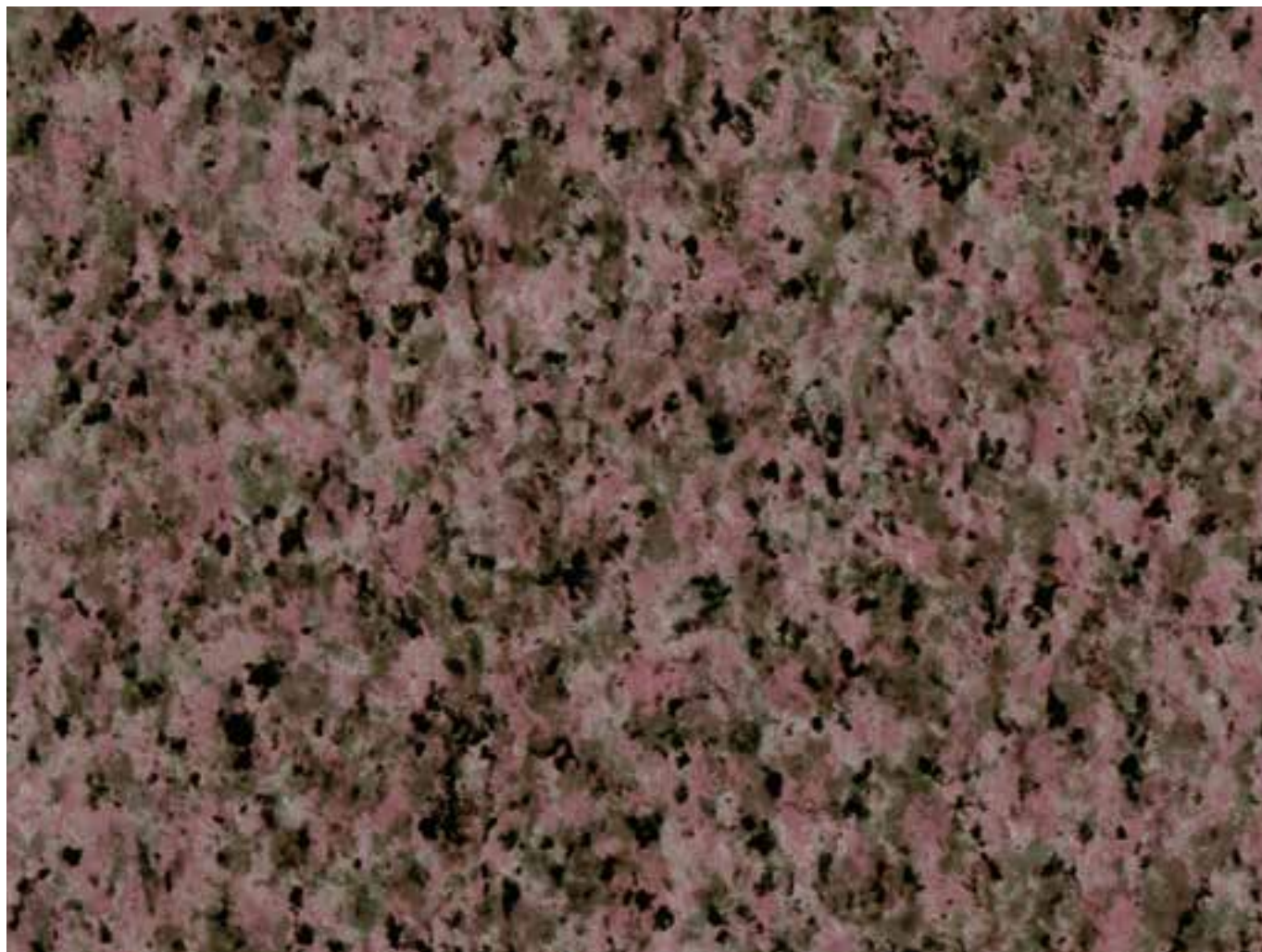
STONE / MARBLE

LAYOUT



Max useful printing width: 1530 mm

REAL SIZE



Colour samples are only indicative, not being possible the faithful reproduction on print.

93171 VAR 001

STONE / MARBLE

LAYOUT



64 CM (25.2")

Max useful printing width: 1530 mm

REAL SIZE



Colour samples are only indicative, not being possible the faithful reproduction on print.

93171 VAR 002

STONE / MARBLE

LAYOUT



64 CM (25.2")

Max useful printing width: 1530 mm

REAL SIZE



Colour samples are only indicative, not being possible the faithful reproduction on print.

93171 VAR 003

STONE / MARBLE

LAYOUT



Max useful printing width: 1530 mm

REAL SIZE



Colour samples are only indicative, not being possible the faithful reproduction on print.

93176 VAR 001

STONE / MARBLE

LAYOUT



Max useful printing width: 1530 mm

REAL SIZE



Colour samples are only indicative, not being possible the faithful reproduction on print.

93183 VAR 001

STONE / MARBLE

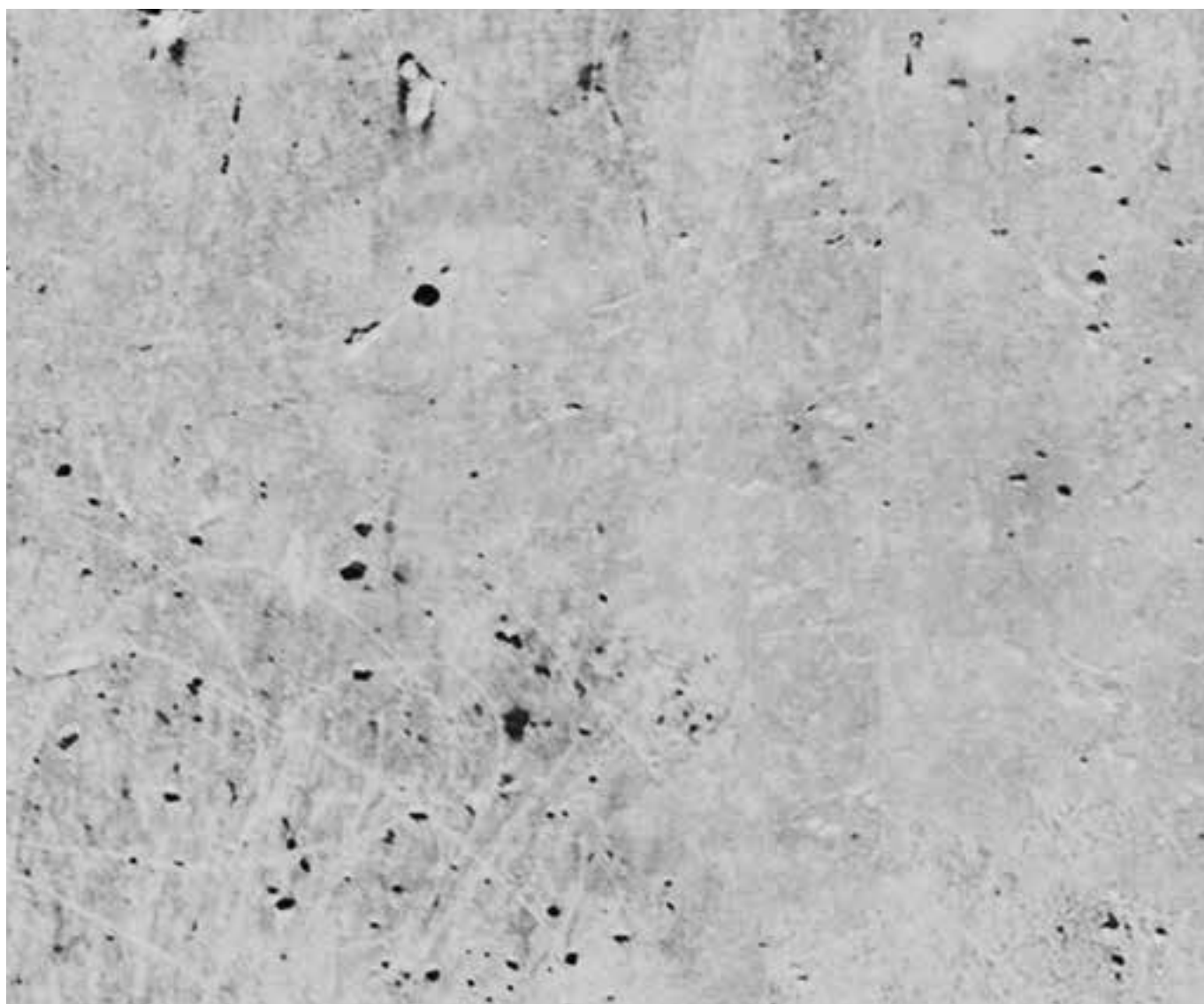
LAYOUT



69 CM (27.2")

Max useful printing width: 1530 mm

REAL SIZE

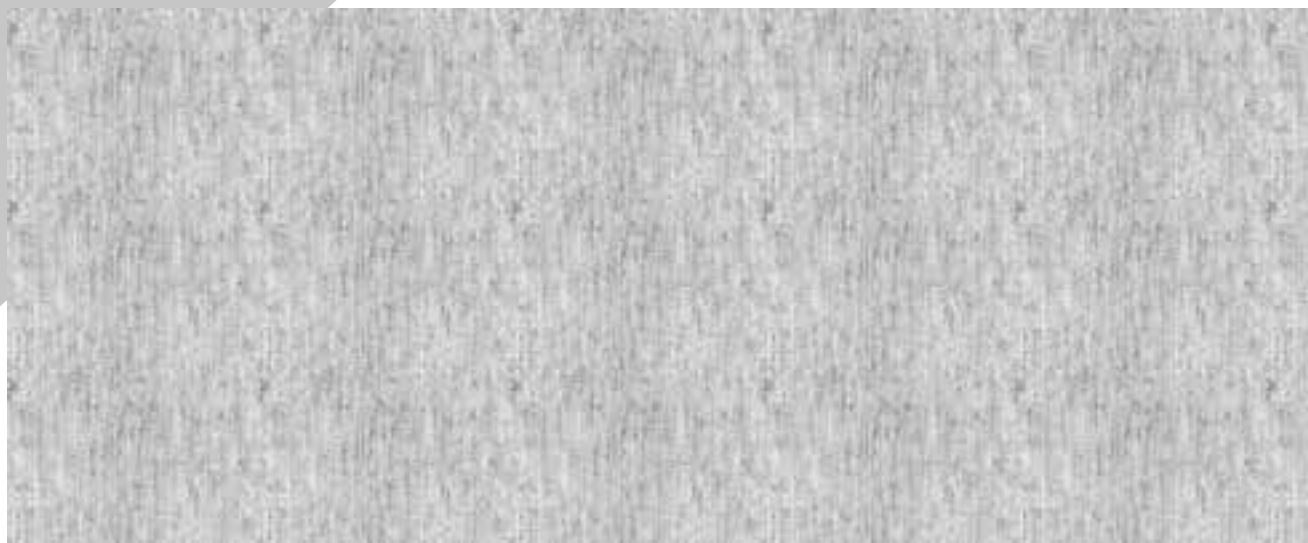


Colour samples are only indicative, not being possible the faithful reproduction on print.

93195 VAR 001

STONE / MARBLE

LAYOUT



64 CM (25.2")

Max useful printing width: 1530 mm

REAL SIZE



Colour samples are only indicative, not being possible the faithful reproduction on print.

93215 VAR 001

STONE / MARBLE



LAYOUT



54 CM (21.3")

Max useful printing width: 1530 mm

REAL SIZE



Colour samples are only indicative, not being possible the faithful reproduction on print.

93216 VAR 001

STONE / MARBLE



LAYOUT



54 CM (21.3")

Max useful printing width: 1530 mm

REAL SIZE



Colour samples are only indicative, not being possible the faithful reproduction on print.

99163 VAR 001

STONE / MARBLE

LAYOUT



69 CM (27.2")

Max useful printing width: 1530 mm

REAL SIZE



Colour samples are only indicative, not being possible the faithful reproduction on print.

99399 VAR 001

STONE / MARBLE

LAYOUT



76 CM (29.5")

Max useful printing width: 1530 mm

REAL SIZE



Colour samples are only indicative, not being possible the faithful reproduction on print.

99440 VAR 001

STONE / MARBLE

LAYOUT



100 CM (39.4")

Max useful printing width: 1530 mm

REAL SIZE



Colour samples are only indicative, not being possible the faithful reproduction on print.



R E N D E R I N G

50650 VAR 097

METAL

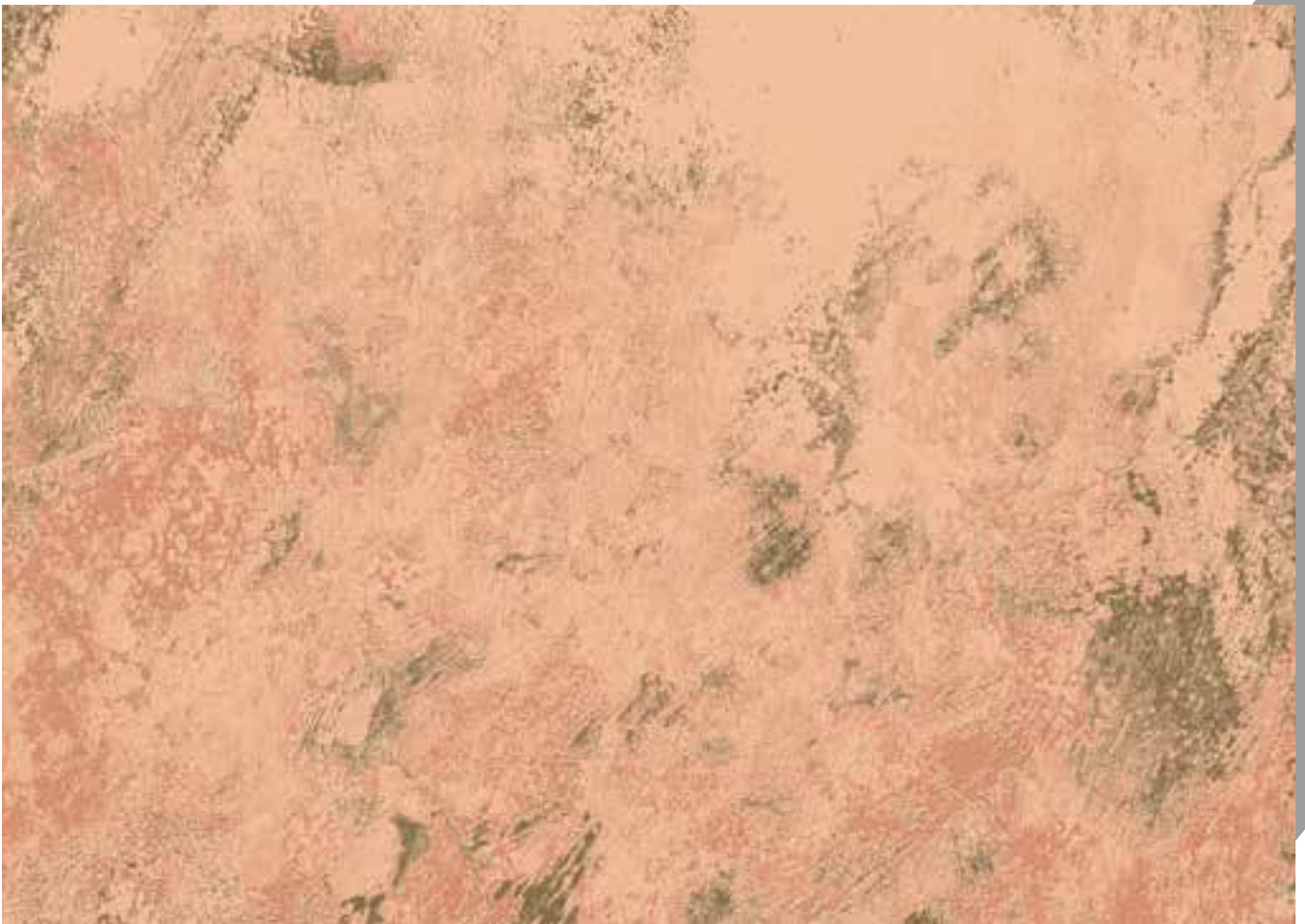
LAYOUT



64 CM (25.2")

Max useful printing width: 1530 mm

REAL SIZE



Colour samples are only indicative, not being possible the faithful reproduction on print.

50650 VAR 098

METAL

LAYOUT



64 CM (25.2")

Max useful printing width: 1530 mm

REAL SIZE



Colour samples are only indicative, not being possible the faithful reproduction on print.

50650 VAR 099

METAL

LAYOUT



64 CM (25.2")

Max useful printing width: 1530 mm

REAL SIZE



Colour samples are only indicative, not being possible the faithful reproduction on print.

50816 VAR 001

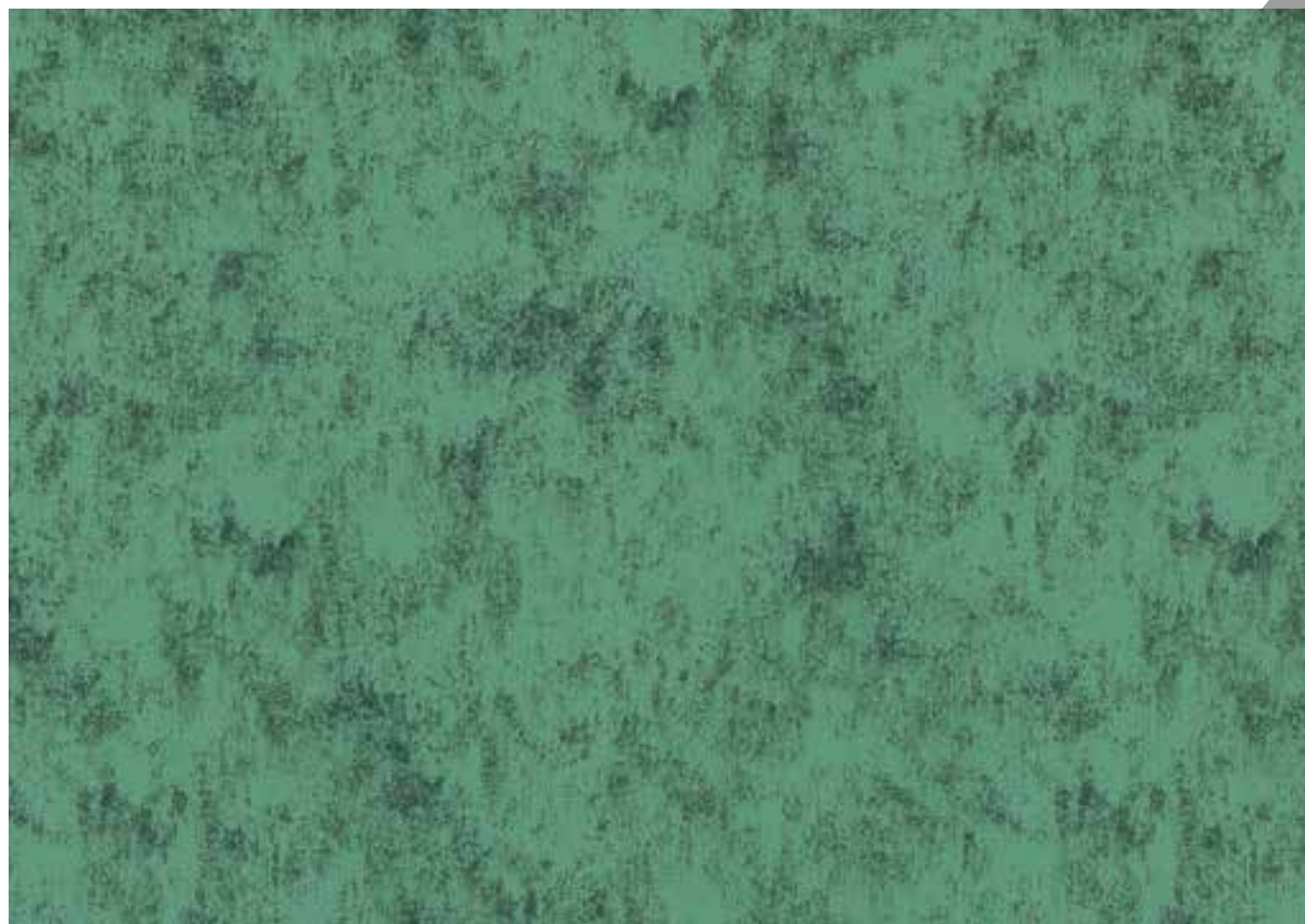
METAL

LAYOUT



Max useful printing width: 1530 mm

REAL SIZE



Colour samples are only indicative, not being possible the faithful reproduction on print.

50816 VAR 002

METAL

LAYOUT



54 CM (21.3")

Max useful printing width: 1530 mm

REAL SIZE

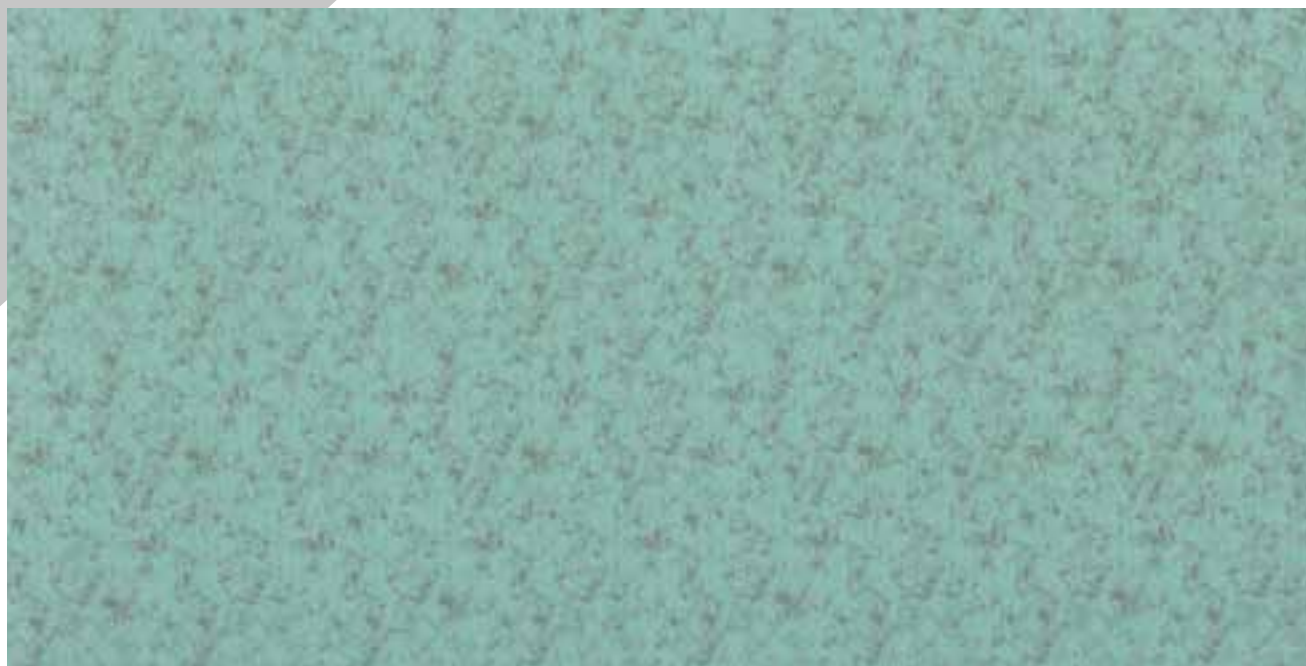


Colour samples are only indicative, not being possible the faithful reproduction on print.

50816 VAR 008

METAL

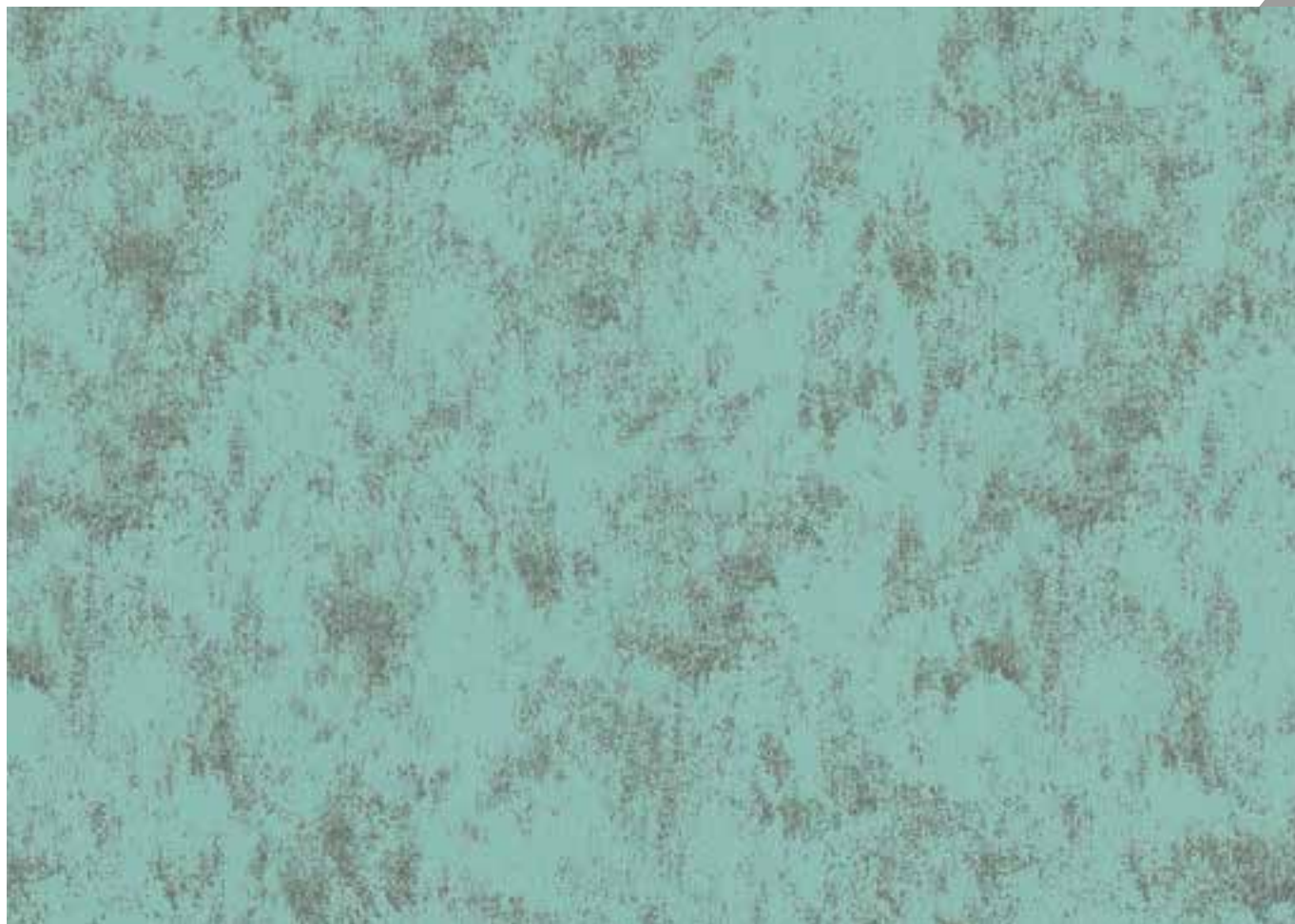
LAYOUT



54 CM (21.3")

Max useful printing width: 1530 mm

REAL SIZE



Colour samples are only indicative, not being possible the faithful reproduction on print.

50869 VAR 010

METAL

LAYOUT



64 CM (25.2")

Max useful printing width: 1530 mm

REAL SIZE



Colour samples are only indicative, not being possible the faithful reproduction on print.

90281 VAR 001

METAL

LAYOUT



Max useful printing width: 1530 mm

REAL SIZE



Colour samples are only indicative, not being possible the faithful reproduction on print.

90281 VAR 020

METAL

LAYOUT



68 CM (27.2")

Max useful printing width: 1530 mm

REAL SIZE



Colour samples are only indicative, not being possible the faithful reproduction on print.

90281 VAR 022

METAL

LAYOUT



Max useful printing width: 1530 mm

REAL SIZE



Colour samples are only indicative, not being possible the faithful reproduction on print.

93068 VAR 001

METAL

LAYOUT



Max useful printing width: 1530 mm

REAL SIZE



Colour samples are only indicative, not being possible the faithful reproduction on print.

93186 VAR 001

METAL

LAYOUT



Max useful printing width: 1530 mm

REAL SIZE

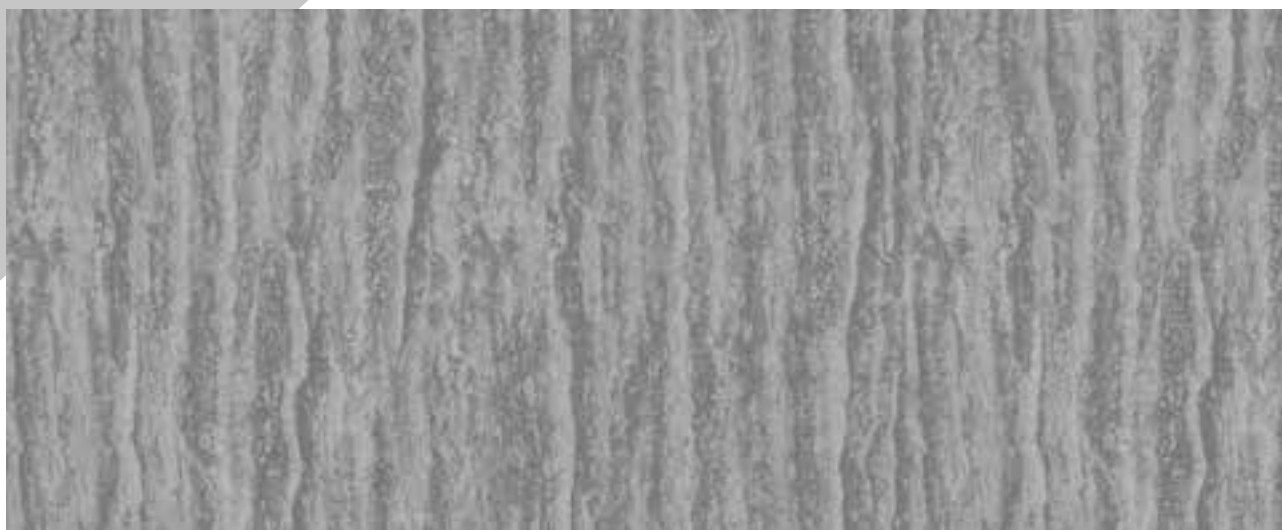


Colour samples are only indicative, not being possible the faithful reproduction on print.

93186 VAR 002

METAL

LAYOUT



64 CM (25.2")

Max useful printing width: 1530 mm

REAL SIZE



Colour samples are only indicative, not being possible the faithful reproduction on print.

93194 VAR 001

METAL

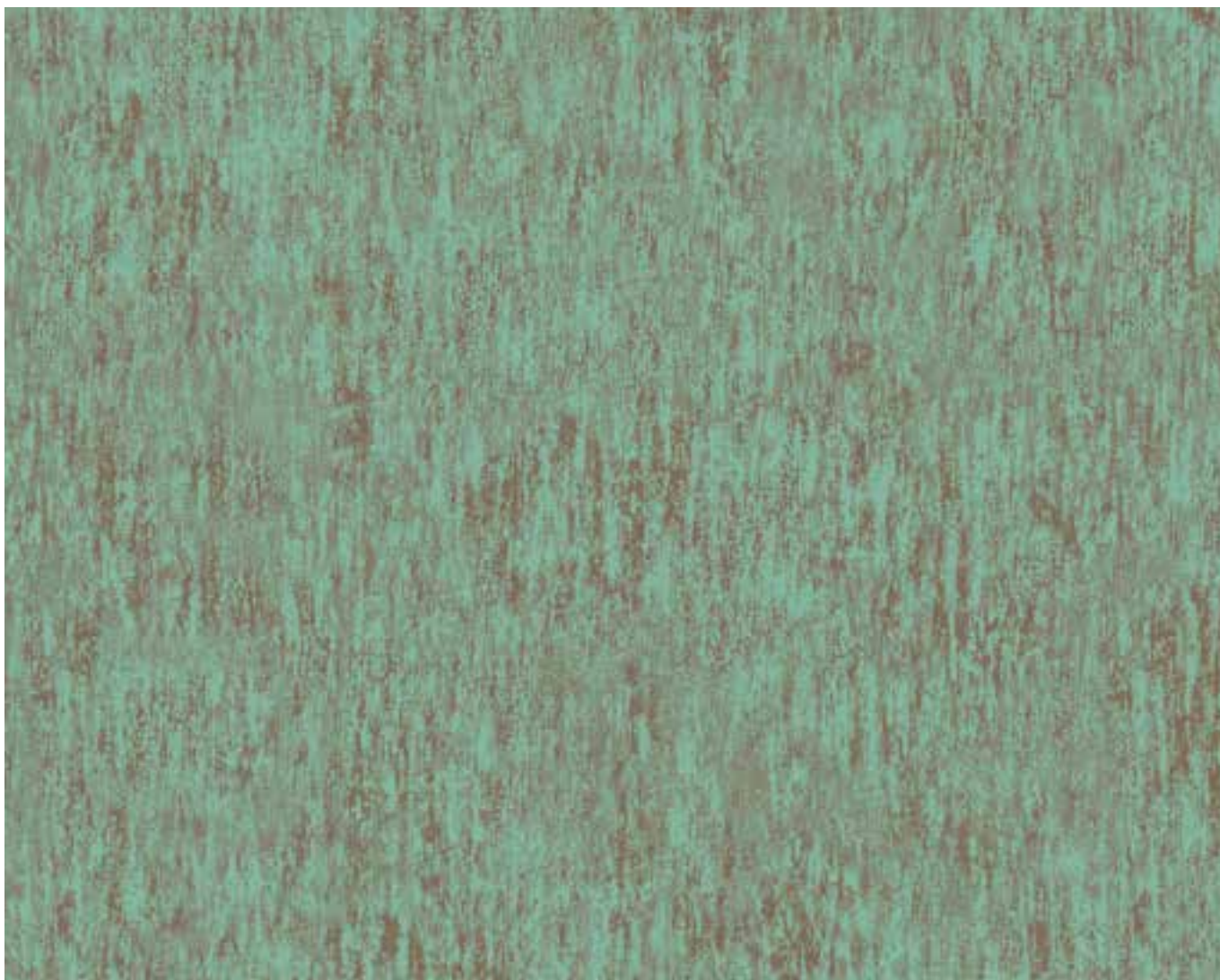
LAYOUT



54 CM (21.3")

Max useful printing width: 1530 mm

REAL SIZE

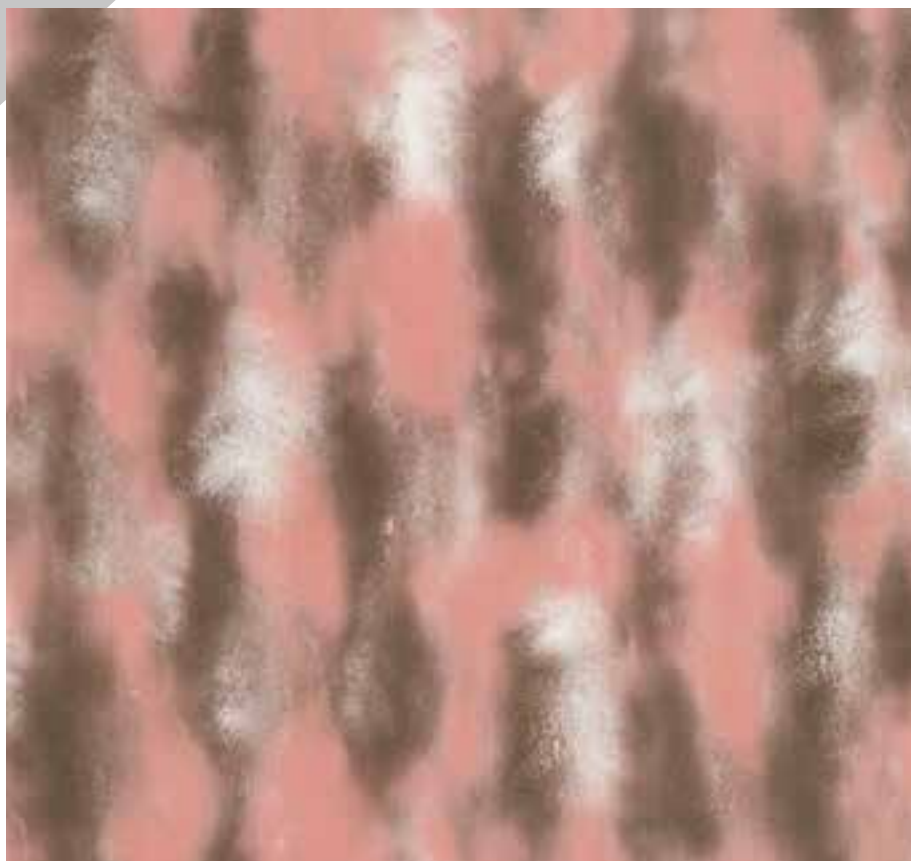


Colour samples are only indicative, not being possible the faithful reproduction on print.

99435 VAR 001

METAL

LAYOUT



120 CM (47.2")

Max useful printing width: 1530 mm

REAL SIZE



Colour samples are only indicative, not being possible the faithful reproduction on print.

99435 VAR 002

METAL

LAYOUT



Max useful printing width: 1530 mm

REAL SIZE



Colour samples are only indicative, not being possible the faithful reproduction on print.

SUBLITEX

**Strada Tagliata 25
12051 Alba (Cn) Italy**



www.sublitex.com



sublitex@miroglio.com



**[+39] 0173.298741
[+39] 0173.298220**



**Sede legale:
Via Santa Margherita 23
12051 Alba (Cn) Italy**