



# Bleached effects

transfer films for metal decoration

since 1994

# decotransalu

## DECOTRANS ALU REVOLUTIONARY CONTENTS

**Decotrans Alu** is a high-definition printed polyester film designed for decorating aluminium **by means of a sublimation process that** ensures resistance to atmospheric agents and wear and tear.

**A quality certified product, its book of 4000** available designs **and the** four designers dedicated **to meeting our customers' needs, make it is the ideal** support tool for architects and interior designers **for embellishing any aluminium surface.**

### USAGE

FRAME



FURNITURE



DOOR



### TEST

1000 HOURS



2000 HOURS



3000 HOURS



### NOTE

**We decline any responsibility for differences in color and design definition which occur in production.**

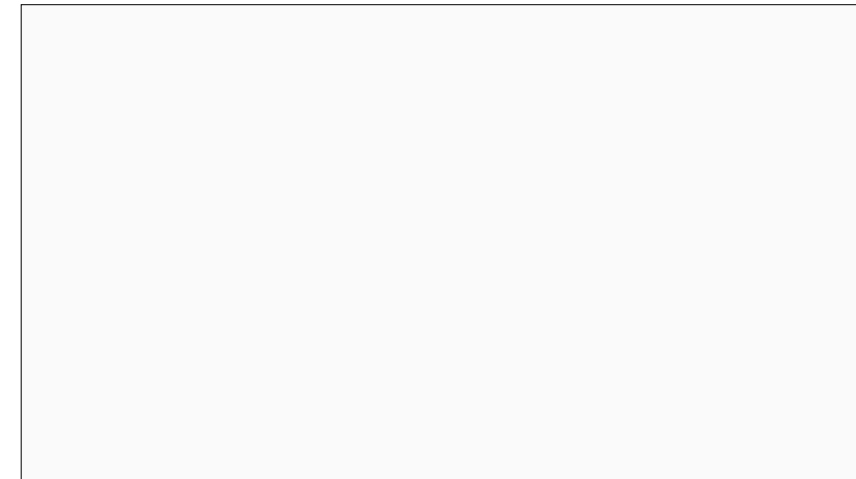
# colour base

THE LIST SHOWS AN INDICATION OF THE MOST COMMON POWDERS USED FOR SUBLIMATION  
ALL POWDERS CAN BE SMOOTH OR TEXTURED

### SAMPLE COLOURS PALETTE (FOR VISUAL PURPOSES ONLY)

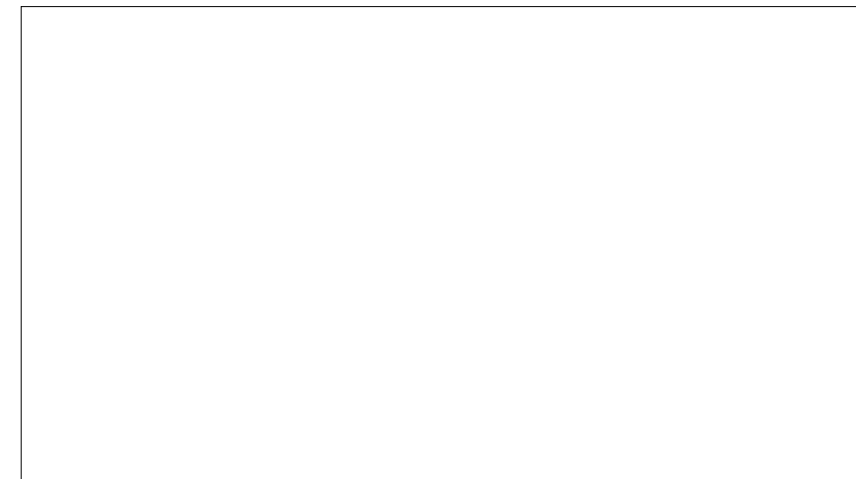
White

Powder coating: PGU22-501



White

Powder coating: PGU22-502







# DecotransAlu Collection

SUBITEX  
The Innovative Printing





# 93056-201 on PGU22-502



POWDER BASE PGU22-502

USAGE



TEST



# Test Report

## SUBLITEX LAB

Sublitex Quality Control Laboratory and R&D : ACCELERATED WEATHERING TEST



TEST REPORT NUMBER:  
RPA\_3923\_2DA

### TEST

XENO TEST  
Apparatus: Q-SUN XE-3 HS  
TOTAL DURATION 2000 HOURS

### SAMPLE EVALUATION

RESIDUAL GLOSS:

99 %

COLOUR VARIATION ΔE:

0.63

GREY SCALE:

4/5

### DECORATION

DESIGN  
93056-201  
POWDER COATING  
PGU22-502



EXPOSED AREA

FINAL RESULT  
PASS



Test was carried on samples supplied.  
However, accelerated weathering test is only one of the conditions necessary for the evaluation of the finished product.

MOD\_TR\_02\_REV0

Date 11/01/2024



# 93056-102 on PGU22-501



POWDER BASE PGU22-501

USAGE



TEST



# Test Report

## SUBLITEX LAB

Sublitex Quality Control Laboratory and R&D : ACCELERATED WEATHERING TEST



TEST REPORT NUMBER:  
RPA\_3925\_2DA

### TEST

XENO TEST  
Apparatus: Q-SUN XE-3 HS  
TOTAL DURATION 2000 HOURS

### SAMPLE EVALUATION

RESIDUAL GLOSS:

58 %

COLOUR VARIATION ΔE:

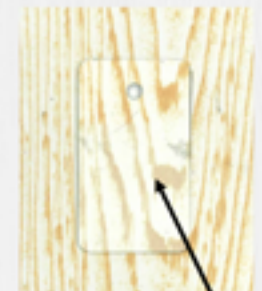
1.68

GREY SCALE:

4

### DECORATION

DESIGN  
93056-102  
POWDER COATING  
PGU22-501



EXPOSED AREA

FINAL RESULT  
PASS



Test was carried on samples supplied.  
However, accelerated weathering test is only one of the conditions necessary for the evaluation of the finished product.

MOD\_TR\_02\_REV0

Date 11/01/2024



# 93056-102 on PGU22-502



POWDER BASE PGU22-502

USAGE



TEST



# Test Report

## SUBLITEX LAB

Sublitex Quality Control Laboratory and R&D : ACCELERATED WEATHERING TEST



TEST REPORT NUMBER:  
RPA\_3924\_2DA

### TEST

XENO TEST  
Apparatus: Q-SUN XE-3 HS  
TOTAL DURATION 2000 HOURS

### SAMPLE EVALUATION

RESIDUAL GLOSS:

106 %

COLOUR VARIATION ΔE:

1.23

GREY SCALE:

4

### DECORATION

DESIGN  
93056-102  
POWDER COATING  
PGU22-502



EXPOSED AREA

FINAL RESULT  
PASS



Test was carried on samples supplied.  
However, accelerated weathering test is only one of the conditions necessary for the evaluation of the finished product.

MOD\_TR\_02\_REV0

Date 11/01/2024



# 93086-103 on PGU22-502



POWDER BASE PGU22-502

USAGE



TEST



# Test Report

## SUBLITEX LAB

Sublitex Quality Control Laboratory and R&D: ACCELERATED WEATHERING TEST



TEST REPORT NUMBER:  
RPA\_2153\_1DA

### TEST

XENO TEST  
Apparatus: Q-SUN XE-3 HS  
TOTAL DURATION 1000 HOURS

### SAMPLE EVALUATION

RESIDUAL GLOSS:

98%

COLOUR VARIATION ΔE:

1.28

GREY SCALE:

4

### DECORATION

DESIGN  
93086-103  
POWDER COATING  
PGU22-502



EXPOSED AREA

FINAL RESULT  
PASS



Test was carried on samples supplied.  
However, accelerated weathering test is only one of the conditions necessary for the evaluation of the finished product.

MOD\_TR\_02\_REV0

Date 27/09/2021

# 93165-214 on PGU22-502



POWDER BASE PGU22-502

USAGE



TEST



# Test Report

## SUBLITEX LAB

Sublitex Quality Control Laboratory and R&D: ACCELERATED WEATHERING TEST



TEST REPORT NUMBER:  
RPA\_3132\_2DA

### TEST

XENO TEST  
Apparatus: Q-SUN XE-3 HS  
TOTAL DURATION: 2000 HOURS

### SAMPLE EVALUATION

RESIDUAL GLOSS:

110%

COLOUR VARIATION ΔE:

0.57

GREY SCALE:

4

### DECORATION

DESIGN  
93165-214  
POWDER COATING  
PGU22-502



EXPOSED AREA

FINAL RESULT  
PASS



Test was carried on samples prepared according to technical specifications supplied by raw materials manufacturers. However, accelerated weathering test is only one of the conditions necessary for the evaluation of the finished product. For a final assessment see further analysis on natural exposure in Florida.

MOD\_TR\_02\_REV0

Date 24/01/2023



# 93265-101 on PGU22-502



POWDER BASE PGU22-502

USAGE



TEST



# Test Report

## SUBLITEX LAB

Sublitex Quality Control Laboratory and R&D : ACCELERATED WEATHERING TEST



TEST REPORT NUMBER:  
RPA\_3926\_2DA

### TEST

XENO TEST  
Apparatus: Q-SUN XE-3 HS  
TOTAL DURATION 2000 HOURS

### SAMPLE EVALUATION

RESIDUAL GLOSS:

101 %

COLOUR VARIATION ΔE:

0.72

GREY SCALE:

4/5

### DECORATION

DESIGN  
93265-101  
POWDER COATING  
PGU22-502



EXPOSED AREA

FINAL RESULT  
PASS

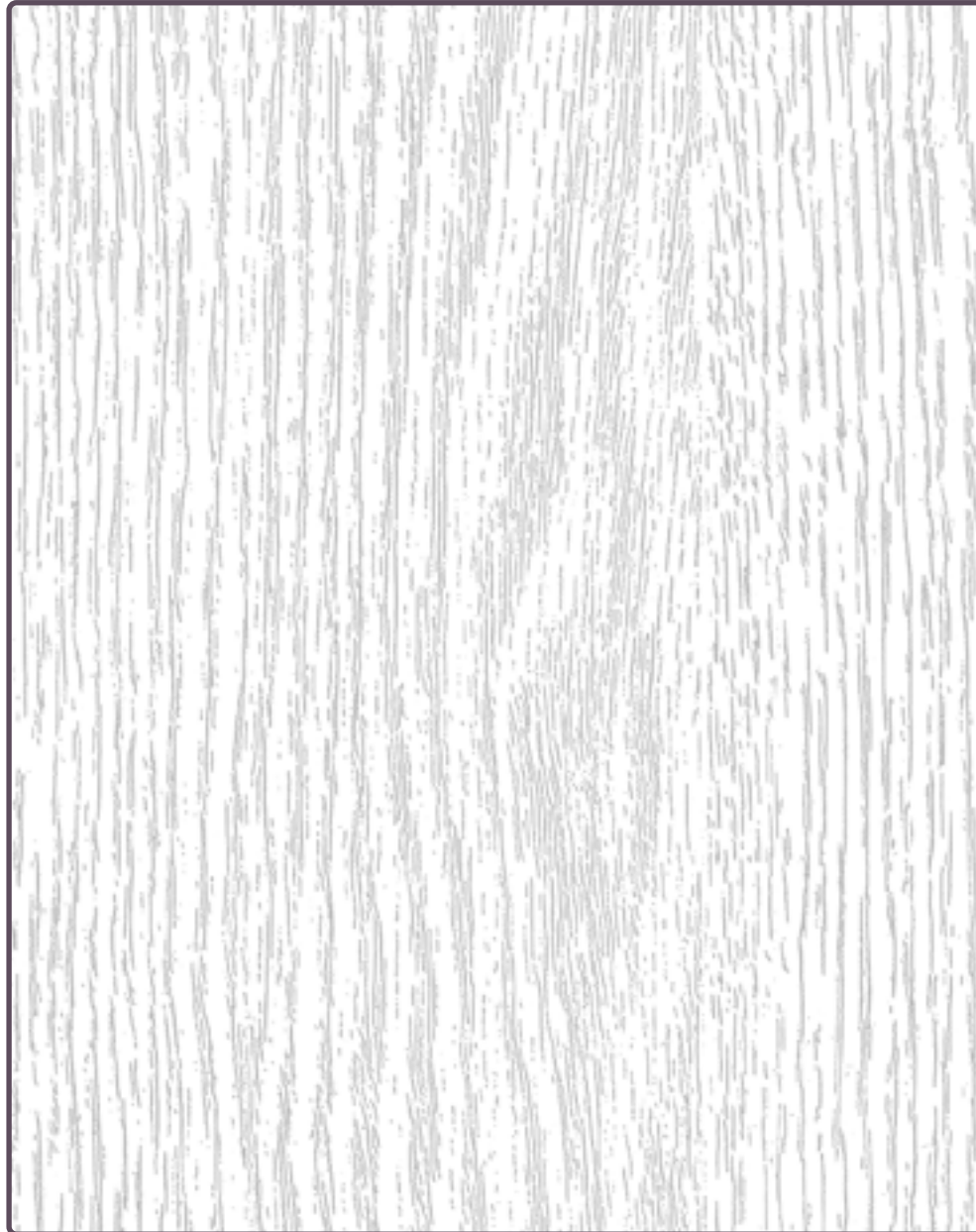


Test was carried on samples supplied.  
However, accelerated weathering test is only one of the conditions necessary for the evaluation of the finished product.

MOD\_TR\_02\_REV0

Date 11/01/2024

# 99052-215 on PGU22-501



POWDER BASE **PGU22-501**

USAGE



TEST



# Test Report

## SUBLITEX LAB

Sublitex Quality Control Laboratory and R&D: ACCELERATED WEATHERING TEST



TEST REPORT NUMBER:  
RPA\_3750\_2DA

### TEST

XENO TEST  
Apparatus: Q-SUN XE-3 HS  
TOTAL DURATION 2000 HOURS

### SAMPLE EVALUATION

RESIDUAL GLOSS:

60%

COLOUR VARIATION  $\Delta E$ :

0.54

GREY SCALE:

4/5

### DECORATION

DESIGN  
99052-215  
POWDER COATING  
PGU22-501



EXPOSED AREA

FINAL RESULT  
PASS



Test was carried on samples supplied.  
However, accelerated weathering test is only one of the conditions necessary for the evaluation of the finished product.

MOD\_TR\_02\_REV0

Date 29/02/2024



# 99052-215 on PGU22-502



POWDER BASE PGU22-502

USAGE



TEST



# Test Report

## SUBLITEX LAB

Sublitex Quality Control Laboratory and R&D: ACCELERATED WEATHERING TEST



TEST REPORT NUMBER:  
RPA\_2154\_2DA

### TEST

XENO TEST  
Apparatus: Q-SUN XE-3 HS  
TOTAL DURATION: 2000 HOURS

### SAMPLE EVALUATION

RESIDUAL GLOSS:

103%

COLOUR VARIATION ΔE:

1.12

GREY SCALE:

4 - 4/5

### DECORATION

DESIGN  
99052-215  
POWDER COATING  
PGU22-502



EXPOSED AREA

FINAL RESULT  
PASS



Test was carried on samples prepared according to technical specifications supplied by raw materials manufacturers. However, accelerated weathering test is only one of the conditions necessary for the evaluation of the finished product. For a final assessment see further analysis on natural exposure in Florida.

MOD\_TR\_02\_REV0

Date 18/01/2023

# 99052-224 on PGU22-502



POWDER BASE PGU22-502

USAGE



TEST



# Test Report

## SUBLITEX LAB

Sublitex Quality Control Laboratory and R&D: ACCELERATED WEATHERING TEST



TEST REPORT NUMBER:  
RPA\_2398\_1DA

### TEST

XENO TEST  
Apparatus: Q-SUN XE-3 HS  
TOTAL DURATION 1000 HOURS

### SAMPLE EVALUATION

RESIDUAL GLOSS:

108%

COLOUR VARIATION ΔE:

0.85

GREY SCALE:

4/5

### DECORATION

DESIGN  
99052-224  
POWDER COATING  
PGU22-502



EXPOSED AREA

FINAL RESULT  
PASS



Test was carried on samples supplied.  
However, accelerated weathering test is only one of the conditions necessary for the evaluation of the finished product.

MOD\_TR\_02\_REV0

Date 29/02/2024



# 99052-225 on PGU22-502



POWDER BASE **PGU22-502**

USAGE



TEST



# Test Report

## SUBLITEX LAB

Sublitex Quality Control Laboratory and R&D: ACCELERATED WEATHERING TEST



TEST REPORT NUMBER:  
RPA\_2261\_1DA

### TEST

XENO TEST  
Apparatus: Q-SUN XE-3 HS  
TOTAL DURATION 1000 HOURS

### SAMPLE EVALUATION

RESIDUAL GLOSS:

96%

COLOUR VARIATION ΔE:

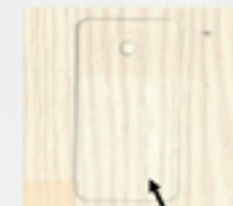
1.12

GREY SCALE:

4

### DECORATION

DESIGN  
99052-225  
POWDER COATING  
PGU22-502



EXPOSED AREA

FINAL RESULT  
PASS



Test was carried on samples supplied.  
However, accelerated weathering test is only one of the conditions necessary for the evaluation of the finished product.

MOD\_TR\_02\_REV0

Date 29/02/2024



# 99229-206 on PGU22-502



POWDER BASE **PGU22-502**

USAGE



TEST



# Test Report

## SUBLITEX LAB

Sublitex Quality Control Laboratory and R&D: ACCELERATED WEATHERING TEST



TEST REPORT NUMBER:  
RPA\_3480\_1DA

### TEST

XENO TEST  
Apparatus: Q-SUN XE-3 HS  
TOTAL DURATION 1000 HOURS

### SAMPLE EVALUATION

RESIDUAL GLOSS:

101%

COLOUR VARIATION ΔE:

2.55

GREY SCALE:

4

### DECORATION

DESIGN  
99229-206  
POWDER COATING  
PGU22-502



EXPOSED AREA

FINAL RESULT  
PASS



Test was carried on samples supplied.  
However, accelerated weathering test is only one of the conditions necessary for the evaluation of the finished product.

MOD\_TR\_02\_REV0

Date 29/02/2024



# 99230-206 on PGU22-502



POWDER BASE PGU22-502

USAGE



TEST



# Test Report

## SUBLITEX LAB

Sublitex Quality Control Laboratory and R&D: ACCELERATED WEATHERING TEST



TEST REPORT NUMBER:  
RPA\_2262\_1DA

### TEST

XENO TEST  
Apparatus: Q-SUN XE-3 HS  
TOTAL DURATION 1000 HOURS

### SAMPLE EVALUATION

RESIDUAL GLOSS:

104%

COLOUR VARIATION ΔE:

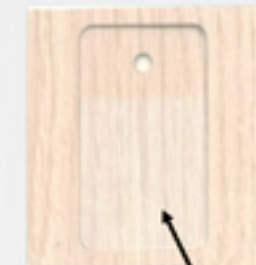
1.9

GREY SCALE:

4

### DECORATION

DESIGN  
99230-206  
POWDER COATING  
PGU22-502



EXPOSED AREA

FINAL RESULT  
PASS



Test was carried on samples supplied.  
However, accelerated weathering test is only one of the conditions necessary for the evaluation of the finished product.

MOD\_TR\_02\_REV0

Date 27/09/2021



# 99244-203 on PGU22-501



POWDER BASE **PGU22-501**

USAGE



TEST



# Test Report

## SUBLITEX LAB

Sublitex Quality Control Laboratory and R&D: ACCELERATED WEATHERING TEST



TEST REPORT NUMBER:  
RPA\_3042\_1DA

### TEST

XENO TEST  
Apparatus: Q-SUN XE-3 HS  
TOTAL DURATION 1000 HOURS

### SAMPLE EVALUATION

RESIDUAL GLOSS:

97%

COLOUR VARIATION ΔE:

0.82

GREY SCALE:

4

### DECORATION

DESIGN  
99244-203  
POWDER COATING  
PGU22-501



EXPOSED AREA

FINAL RESULT  
PASS



Test was carried on samples supplied.  
However, accelerated weathering test is only one of the conditions necessary for the evaluation of the finished product.

MOD\_TR\_02\_REV0

Date 20/10/2022



# 99244-203 on PGU22-502



POWDER BASE **PGU22-502**

USAGE



TEST



# Test Report

## SUBLITEX LAB

Sublitex Quality Control Laboratory and R&D: ACCELERATED WEATHERING TEST



TEST REPORT NUMBER:  
RPA\_3135\_2DA

### TEST

XENO TEST  
Apparatus: Q-SUN XE-3 HS  
TOTAL DURATION: 2000 HOURS

### SAMPLE EVALUATION

RESIDUAL GLOSS:

103%

COLOUR VARIATION ΔE:

1.61

GREY SCALE:

4

### DECORATION

DESIGN  
99244-203  
POWDER COATING  
PGU22-502



EXPOSED AREA

FINAL RESULT  
PASS



Test was carried on samples prepared according to technical specifications supplied by raw materials manufacturers. However, accelerated weathering test is only one of the conditions necessary for the evaluation of the finished product. For a final assessment see further analysis on natural exposure in Florida.

MOD\_TR\_02\_REV0

Date 24/01/2023



# 99276-102 on PGU22-501



POWDER BASE PGU22-501

USAGE



TEST



# Test Report

## SUBLITEX LAB

Sublitex Quality Control Laboratory and R&D: ACCELERATED WEATHERING TEST



TEST REPORT NUMBER:  
RPA\_758\_1DA

### TEST

XENO TEST  
Apparatus: Q-SUN XE-3 HS  
TOTAL DURATION 1000 HOURS

### SAMPLE EVALUATION

RESIDUAL GLOSS:

93%

COLOUR VARIATION ΔE:

1.06

GREY SCALE:

4/5

### DECORATION

DESIGN  
99276-102  
POWDER COATING  
PGU22-501



EXPOSED AREA

FINAL RESULT  
PASS



Test was carried on samples supplied.  
However, accelerated weathering test is only one of the  
conditions necessary for the evaluation of the finished  
product.

MOD\_TR\_02\_REV0

Date 26/07/2018



# 9V001-154 on PGU22-502



POWDER BASE **PGU22-502**

USAGE



TEST



# Test Report

## SUBLITEX LAB

Sublitex Quality Control Laboratory and R&D: ACCELERATED WEATHERING TEST



TEST REPORT NUMBER:  
RPA\_3019\_3DA

### TEST

XENO TEST  
Apparatus: Q-SUN XE-3 HS  
TOTAL DURATION: 3000 HOURS

### SAMPLE EVALUATION

RESIDUAL GLOSS:

107%

COLOUR VARIATION ΔE:

0.73

GREY SCALE:

4/5

### DECORATION

DESIGN  
9V001-154  
POWDER COATING  
PGU22-502



EXPOSED AREA

### FINAL RESULT

PASS



Test was carried on samples prepared according to technical specifications supplied by raw materials manufacturers. However, accelerated weathering test is only one of the conditions necessary for the evaluation of the finished product. For a final assessment see further analysis on natural exposure in Florida.

MOD\_TR\_02\_REV0

Date 30/01/2023



# 9V002-154 on PGU22-502



POWDER BASE **PGU22-502**

USAGE



TEST



# Test Report

## SUBLITEX LAB

Sublitex Quality Control Laboratory and R&D: ACCELERATED WEATHERING TEST



TEST REPORT NUMBER:  
RPA\_3023\_3DA

### TEST

XENO TEST  
Apparatus: Q-SUN XE-3 HS  
TOTAL DURATION: 3000 HOURS

### SAMPLE EVALUATION

RESIDUAL GLOSS:

96%

COLOUR VARIATION ΔE:

0.76

GREY SCALE:

4/5

### DECORATION

DESIGN  
9V002-154  
POWDER COATING  
PGU22-502



EXPOSED AREA

FINAL RESULT  
PASS



Test was carried on samples prepared according to technical specifications supplied by raw materials manufacturers. However, accelerated weathering test is only one of the conditions necessary for the evaluation of the finished product. For a final assessment see further analysis on natural exposure in Florida.

MOD\_TR\_02\_REV0

Date 30/01/2023



# 9V003-154 on PGU22-502



POWDER BASE **PGU22-502**

USAGE



TEST



# Test Report

## SUBLITEX LAB

Sublitex Quality Control Laboratory and R&D: ACCELERATED WEATHERING TEST



TEST REPORT NUMBER:  
RPA\_3304\_2DA

### TEST

XENO TEST  
Apparatus: Q-SUN XE-3 HS  
TOTAL DURATION 2000 HOURS

### SAMPLE EVALUATION

RESIDUAL GLOSS:

91 %

COLOUR VARIATION ΔE:

0.56

GREY SCALE:

4 – 4/5

### DECORATION

DESIGN  
9V003-154  
POWDER COATING  
PGU22-502



EXPOSED AREA

FINAL RESULT  
PASS



Test was carried on samples supplied.  
However, accelerated weathering test is only one of the conditions necessary for the evaluation of the finished product.

MOD\_TR\_02\_REV0

Date 29/02/2024



# 9V004-154 on PGU22-502



POWDER BASE PGU22-502

USAGE



TEST



# Test Report

## SUBLITEX LAB

Sublitex Quality Control Laboratory and R&D: ACCELERATED WEATHERING TEST



TEST REPORT NUMBER:  
RPA\_3027\_3DA

### TEST

XENO TEST  
Apparatus: Q-SUN XE-3 HS  
TOTAL DURATION: 3000 HOURS

### SAMPLE EVALUATION

RESIDUAL GLOSS:

96%

COLOUR VARIATION ΔE:

0.68

GREY SCALE:

4/5

### DECORATION

DESIGN  
9V004-154  
POWDER COATING  
PGU22-502



EXPOSED AREA

FINAL RESULT  
PASS



Test was carried on samples prepared according to technical specifications supplied by raw materials manufacturers. However, accelerated weathering test is only one of the conditions necessary for the evaluation of the finished product. For a final assessment see further analysis on natural exposure in Florida.

MOD\_TR\_02\_REV0

Date 30/01/2023



# 9V005-154 on PGU22-502



POWDER BASE PGU22-502

USAGE



TEST



# Test Report

## SUBLITEX LAB

Sublitex Quality Control Laboratory and R&D: ACCELERATED WEATHERING TEST



TEST REPORT NUMBER:  
RPA\_3305\_2DA

### TEST

XENO TEST  
Apparatus: Q-SUN XE-3 HS  
TOTAL DURATION 2000 HOURS

### SAMPLE EVALUATION

RESIDUAL GLOSS:

94 %

COLOUR VARIATION ΔE:

0.25

GREY SCALE:

4 – 4/5

### DECORATION

DESIGN  
9V005-154  
POWDER COATING  
PGU22-502



EXPOSED AREA

FINAL RESULT  
PASS



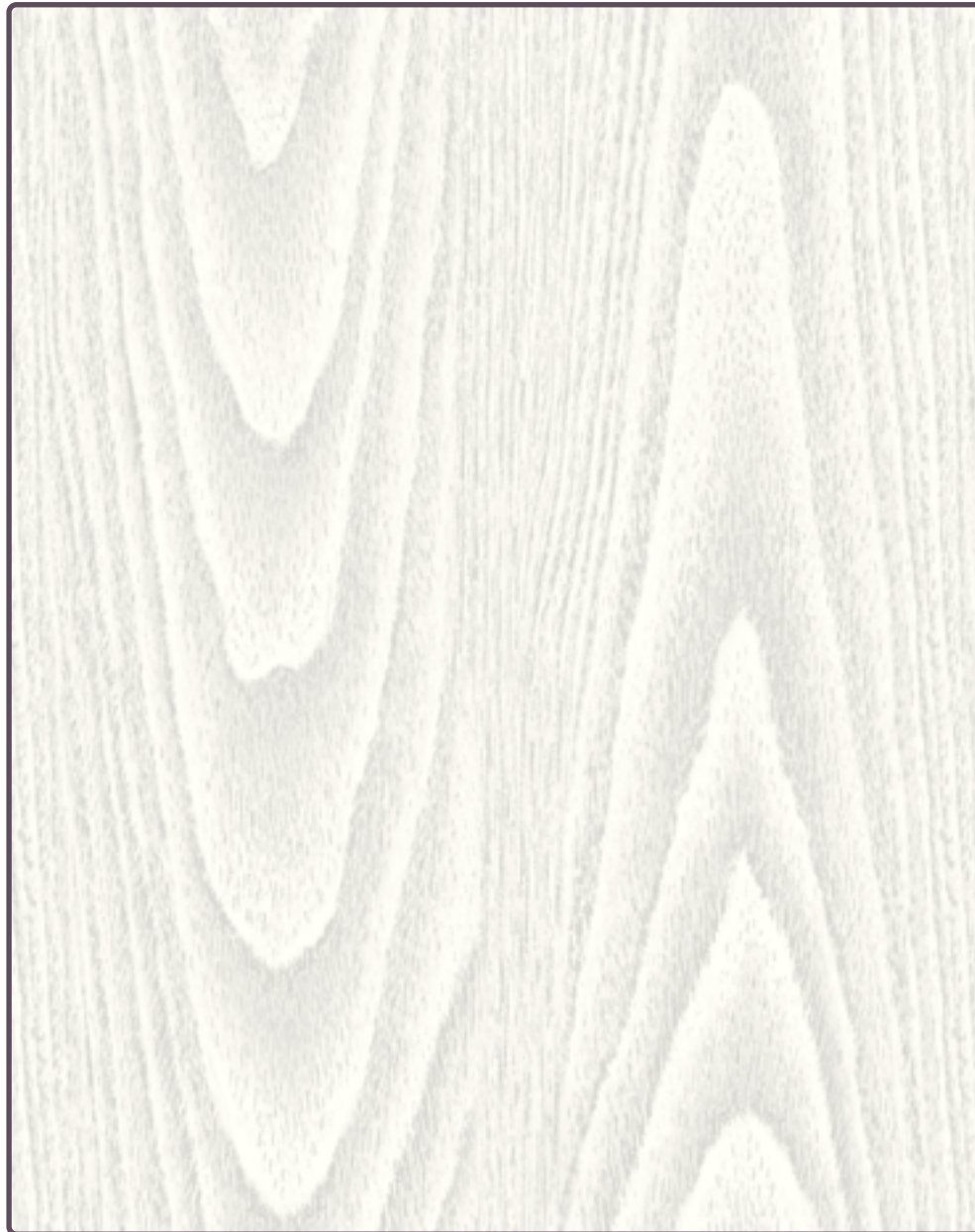
Test was carried on samples supplied.  
However, accelerated weathering test is only one of the conditions necessary for the evaluation of the finished product.

MOD\_TR\_02\_REV0

Date 29/02/2024



# 9V006-154 on PGU22-502



POWDER BASE PGU22-502

USAGE



TEST



# Test Report

## SUBLITEX LAB

Sublitex Quality Control Laboratory and R&D: ACCELERATED WEATHERING TEST



TEST REPORT NUMBER:  
RPA\_3087\_3DA

### TEST

XENO TEST  
Apparatus: Q-SUN XE-3 HS  
TOTAL DURATION: 3000 HOURS

### SAMPLE EVALUATION

RESIDUAL GLOSS:

86%

COLOUR VARIATION ΔE:

0.94

GREY SCALE:

4

### DECORATION

DESIGN  
9V006-154  
POWDER COATING  
PGU22-502



EXPOSED AREA

FINAL RESULT  
PASS



Test was carried on samples prepared according to technical specifications supplied by raw materials manufacturers. However, accelerated weathering test is only one of the conditions necessary for the evaluation of the finished product. For a final assessment see further analysis on natural exposure in Florida.

MOD\_TR\_02\_REV0

Date 30/01/2023



# 9V007-154 on PGU22-502



POWDER BASE PGU22-502

USAGE



TEST



# Test Report

## SUBLITEX LAB

Sublitex Quality Control Laboratory and R&D: ACCELERATED WEATHERING TEST



TEST REPORT NUMBER:  
RPA\_3088\_3DA

### TEST

XENO TEST  
Apparatus: Q-SUN XE-3 HS  
TOTAL DURATION: 3000 HOURS

### SAMPLE EVALUATION

RESIDUAL GLOSS:

82%

COLOUR VARIATION ΔE:

0.91

GREY SCALE:

4

### DECORATION

DESIGN  
9V007-154  
POWDER COATING  
PGU22-502



EXPOSED AREA

FINAL RESULT  
PASS



Test was carried on samples prepared according to technical specifications supplied by raw materials manufacturers. However, accelerated weathering test is only one of the conditions necessary for the evaluation of the finished product. For a final assessment see further analysis on natural exposure in Florida.

MOD\_TR\_02\_REV0

Date 30/01/2023



# 9V008-154 on PGU22-502



POWDER BASE PGU22-502

USAGE



TEST



# Test Report

## SUBLITEX LAB

Sublitex Quality Control Laboratory and R&D: ACCELERATED WEATHERING TEST



TEST REPORT NUMBER:  
RPA\_3306\_2DA

### TEST

XENO TEST  
Apparatus: Q-SUN XE-3 HS  
TOTAL DURATION 2000 HOURS

### SAMPLE EVALUATION

RESIDUAL GLOSS:

92 %

COLOUR VARIATION ΔE:

0.65

GREY SCALE:

4 - 4/5

### DECORATION

DESIGN  
9V008-154  
POWDER COATING  
PGU22-502



EXPOSED AREA

FINAL RESULT  
PASS



Test was carried on samples supplied.  
However, accelerated weathering test is only one of the conditions necessary for the evaluation of the finished product.

MOD\_TR\_02\_REV0

Date 29/02/2024



# 9V009-154 on PGU22-502



POWDER BASE PGU22-502

USAGE



TEST



# Test Report

## SUBLITEX LAB

Sublitex Quality Control Laboratory and R&D: ACCELERATED WEATHERING TEST



TEST REPORT NUMBER:  
RPA\_3146\_3DA

### TEST

XENO TEST  
Apparatus: Q-SUN XE-3 HS  
TOTAL DURATION: 3000 HOURS

### SAMPLE EVALUATION

RESIDUAL GLOSS:

104%

COLOUR VARIATION ΔE:

0.61

GREY SCALE:

4/5

### DECORATION

DESIGN  
9V009-154  
POWDER COATING  
PGU22-502



EXPOSED AREA

FINAL RESULT  
PASS



Test was carried on samples prepared according to technical specifications supplied by raw materials manufacturers. However, accelerated weathering test is only one of the conditions necessary for the evaluation of the finished product. For a final assessment see further analysis on natural exposure in Florida.

MOD\_TR\_02\_REV0

Date 31/01/2023



# 9V010-154 on PGU22-502



POWDER BASE **PGU22-502**

USAGE



TEST



# Test Report

## SUBLITEX LAB

Sublitex Quality Control Laboratory and R&D: ACCELERATED WEATHERING TEST



TEST REPORT NUMBER:  
RPA\_3308\_2DA

### TEST

XENO TEST  
Apparatus: Q-SUN XE-3 HS  
TOTAL DURATION 2000 HOURS

### SAMPLE EVALUATION

RESIDUAL GLOSS:

94 %

COLOUR VARIATION ΔE:

0.94

GREY SCALE:

4 – 4/5

### DECORATION

DESIGN  
9V010-154  
POWDER COATING  
PGU22-502



EXPOSED AREA

FINAL RESULT  
PASS



Test was carried on samples supplied.  
However, accelerated weathering test is only one of the conditions necessary for the evaluation of the finished product.

MOD\_TR\_02\_REV0

Date 29/02/2024

# 9V024-154 on PGU22-502



POWDER BASE **PGU22-502**

USAGE



TEST



# Test Report

## SUBLITEX LAB

Sublitex Quality Control Laboratory and R&D: ACCELERATED WEATHERING TEST



TEST REPORT NUMBER:  
RPA\_3147\_3DA

### TEST

XENO TEST  
Apparatus: Q-SUN XE-3 HS  
TOTAL DURATION: 3000 HOURS

### SAMPLE EVALUATION

RESIDUAL GLOSS:

106%

COLOUR VARIATION  $\Delta E$ :

0.2

GREY SCALE:

4/5

### DECORATION

DESIGN  
9V024-154  
POWDER COATING  
PGU22-502



EXPOSED AREA

FINAL RESULT  
PASS



Test was carried on samples prepared according to technical specifications supplied by raw materials manufacturers. However, accelerated weathering test is only one of the conditions necessary for the evaluation of the finished product. For a final assessment see further analysis on natural exposure in Florida.

MOD\_TR\_02\_REV0

Date 30/01/2023



decotransalu

# index

—  
*color samples  
and codes*





# technical information

---

*technical data  
and qualitative specifications*

*For more information visit us  
[sublitexarchitectural.com](http://sublitexarchitectural.com)*

# decotransalu

**DESCRIPTION** *Transfer polyester film for finishing of pre-painted aluminium with polyurethane and polyester powder*

**SUPPORT**

*film thickness*  
19, 21 or 23 µm

---

*roll width*  
1620/1860mm

---

*core diameter*  
75 mm

---

*roll diameter*  
180/215 mm

---

*roll length*  
750/1000 m

---

*weight*  
max 50 kg

**PRINTING** *In rotogravure using solvent based inks*

**APPLICATION SYSTEMS** *It is possible to apply the product with both flat presses and oven. Sublitex standard transfer parameters for quality control laboratory and production, are:*

	SURFACE TEMPERATURE
FLAT PRESS	200°C (+/- 3°C)
OVEN	185 – 205 °C

Our "QUALIDECO" is approved for external use, in the combinations design-colorway/powder as attached to the data sheet n°1 and its subsequent amendments. Any changes must be prior notified, and only if approved by our laboratories, will be included in the list of products suitable for outdoor use. If these guidelines are not followed, Sublitex disclaims any responsibility for the misuse of its products and QUALIDECO brand.

**QUALITY AND R&D** *Internal quality controls are carried out, particularly through comparative tests of application and evaluation of color rendering and decorated surface by a direct comparison with master sample (production standards)*

**WARNING!** *It is important to follow the detailed instructions for proper application of all elements of decoration from the proper cooking of the bases (see powders' supplier data sheet).*

# technical information

**QUALITY AND R&D** *It is possible that there are color differences on the rolls between different production lots without having color differences on the sublimated product*

**LABORATORY TESTS**

*Raw materials, semi-finished products are controlled by:*

FT-IR-ATR (Infrared Spettroscopy)

GC-FID / HS-GC (Gaschromatography)

TLC-CCD

**DURABILITY TESTS**

*Durability test by accelerated ageing (Xenon Test) according to ISO 16474-2 of sublimated products on to aluminium profile (phospho-chromate) painted with Qualicoat approved powder*

*colorimetric coordinates (CIE-LAB) and gloss after 1000 (2000 for Class 2) hours of exposure (ΔE) with intermediate checks every 200-250 hours*

*contrast between exposed area and the reference sample, evaluation greyscale (ISO 105 A-02)*

*visual appearance after 1000 hours exposure (2000 for Class 2)*

**STORAGE** *Keep in a dry and ventilated place, protect from heat and sunlight*

**PRODUCT EXPIRY DATE** *1 year in the above-mentioned conditions*

**PACKAGING** *Cardboard boxes*

**NOTICE AND ADVICE** *Sublitex is not responsible for any unusual applications nor for improper storage of the product*

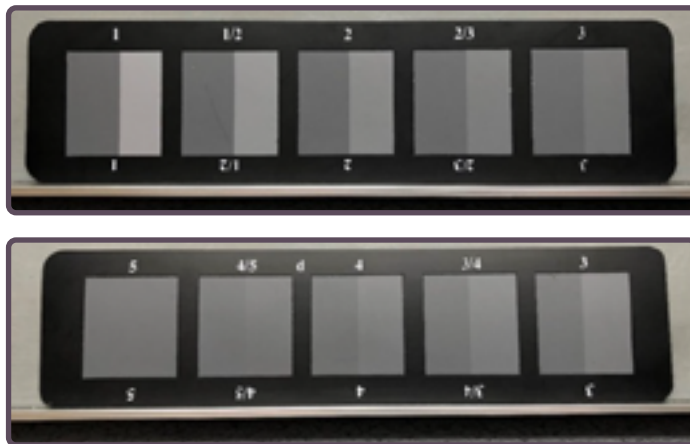
The above information, reflect our current "State of the Art", and are disclosed by us without commitment. However possible future changes and revisions according to the evolving technology and business are possible. We invite the buyer to the verification of the information given on the basis of its technology and engineering.



# decotransalu

## Xeno Test: Q-SUN XE-3 HS

The Q-SUN Xe-3 xenon arc chamber reproduces the damage caused by full-spectrum sunlight and rain. In a few days or weeks, the Q-SUN tester can reproduce the damage that occurs over months or years outdoors. The Q-SUN Xe-3 tester is a full-featured lightfastness, colorfastness, and photostability chamber at a breakthrough price. It utilizes three separate xenon lamps for a large capacity. The Q-SUN Xe-3 tester's slide out specimen tray is 451mm x 718mm and is useful for exposing large, three-dimensional parts or components. The Xe-3 tester offers standard humidity control, and optional spray, back spray and chiller features. The Q-SUN Xe-3 is the only xenon arc tester that also has an optional dual spray capability. This allows for a second liquid such as acid rain or soap solutions, to be sprayed onto test specimens. The Q-SUN Xe-3 is the simplest, most reliable, and easiest to use full-sized xenon arc chamber available.



The grey scale is used to control the color fastness (solidity of the color) which is the degree of resistance of a color. Grey Scale allows to evaluate the staining and change in color (color fastness) according to the standards: ISO 105 and BS 1006.

A sample can PASS the xeno test if it is evaluated 4 or more on the grey scale, if it is evaluated less than 4 the test result is FAIL



**SUBLITEX**  
The Innovative Printing

*Strada Tagliata 25*  
*12051 Alba (CN) - Italy*  
*t. +39 0173 298741*

**[sublitex@miroglio.com](mailto:sublitex@miroglio.com)**  
**[architectural.sublitex.com](http://architectural.sublitex.com)**